









# NL1-45-BLD-00-0XX-#  
REV. P

DATUM A  
UTM COORDINATES  
E: 507,202.095  
N: 6,168,852.330  
LAT: 55.665453  
LONG: 110.885509  
DEG. MIN. SEC.  
LAT: 55-39-55.6  
LONG: 110-53-7.8

SECURITY CAMERAS

- 3MP SECURITY CAMERA LOCATION & CAMERA SIGHT LINES
- HD PTZ SECURITY CAMERA LOCATION 360° VIEW

REFER TO DRAWINGS A-10 & A-11 FOR DETAILED BUILDING SECURITY PLANS

DATUM BM-MC-02  
UTM NAD 83  
E: 506,995.89  
N: 6,168,879.89  
ELEV: 568.300

WEST POND

EMERGENCY SERVICES  
NOT PART OF THIS DP APPLICATION

SOUTH ACCESS ROAD

SOFTBALL FIELD

SOFTBALL FIELD

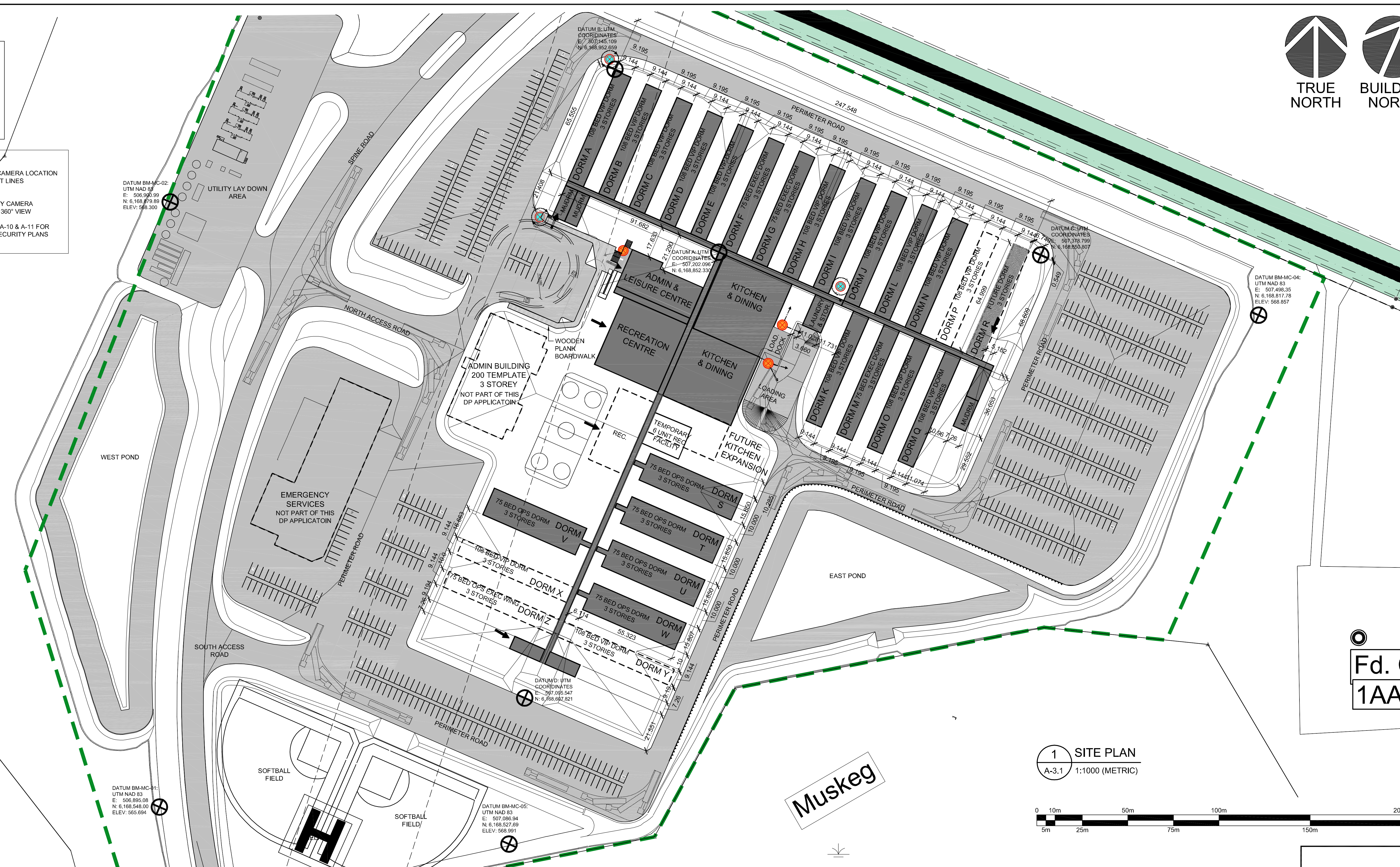
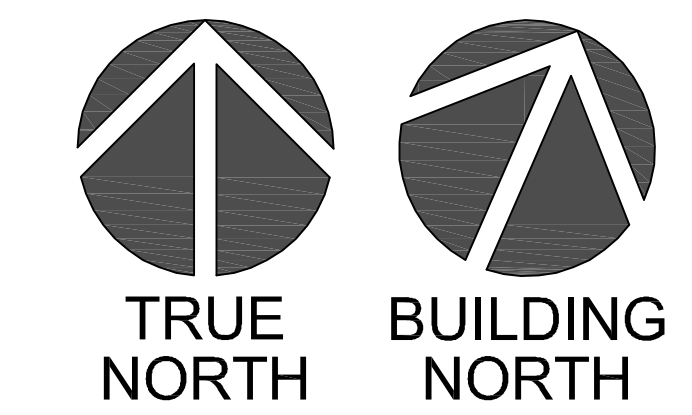
DATUM D-UTM  
COORDINATES  
E: 507,095.547  
N: 6,168,947.821

DATUM B-UTM  
COORDINATES  
E: 507,145.109  
N: 6,168,922.659

DATUM A-UTM  
COORDINATES  
E: 507,202.095  
N: 6,168,852.330

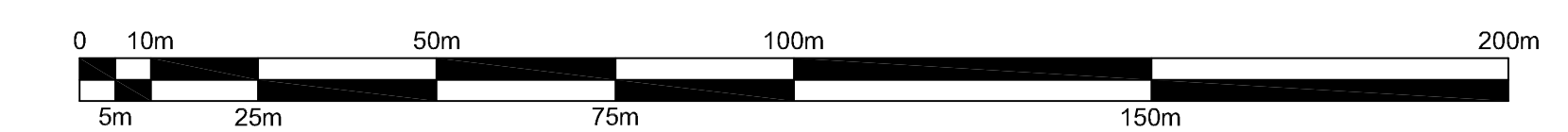
DATUM C-UTM  
COORDINATES  
E: 507,378.799  
N: 6,168,920.017

DATUM BM-MC-04:  
UTM NAD 83  
E: 507,498.35  
N: 6,168,817.78  
ELEV: 568.657



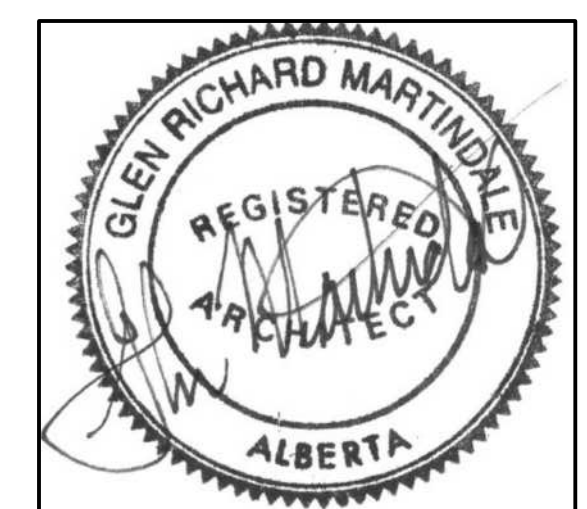
Fd. Cas  
1AA/13

1 SITE PLAN  
A-3.1 1:1000 (METRIC)



Muskeg

DRAWING NUMBER	REFERENCE DRAWINGS	STAMPS



REV NO	REVISION	DATE	DRN	CKD	DES	LDE	PE	DESIGNED BY	CONSULTANT LOGO
A	ISSUED FOR CLIENT REVIEW	13/06/17	AP		GM	GM		RK	 Roman Kujath Architects 415 10357 109 Street Edmonton, Alberta T5J 1N3 P 780 420 1237 F 780 429 1498 E gmartindale@rkarchitects.ca
B	ISSUED FOR PRICING	13/07/15	AP/MM		GM	GM		AP	
C	REVISED - ISSUED FOR PRICING	13/09/03	AP		GM	GM		GM	
D	REVISED - ISSUED FOR DEVELOPMENT PERMIT	13/09/20	KD		GM	GM		GM	
E	ISSUED FOR DEVELOPMENT PERMIT	13/09/23	MM		GM	GM		GM	
F	REVISED - ISSUED FOR PRICING	13/10/18	MM		GM	GM		GM	
G	REVISED - ISSUED FOR PRICING	13/12/02	MM		GM	GM		GM	
H	OPTIONAL LAYOUT FOR CLIENT REVIEW	13/12/13	MM		GM	GM		GM	
J	REVISED - ISSUED FOR PRICING	13/12/17	MM		GM	GM		GM	
K	REVISED - ISSUED FOR PRICING (SECURITY CAMERAS)	14/01/14	MM		GM	GM		GM	
L	REVISED - ISSUED FOR PRICING	14/01/20	MM		GM	GM		GM	
P	ISSUED FOR BUILDING PERMIT	14/04/15	MM		GM	GM		GM	

DESIGNED BY	CONSULTANT LOGO
RK	 Cenovus FCCL Ltd Roman Kujath Architects 415 10357 109 Street Edmonton, Alberta T5J 1N3 P 780 420 1237 F 780 429 1498 E gmartindale@rkarchitects.ca
DRAWN BY	
CHECKED BY	
LEAD DISC ENG	
PROJECT ENGINEER	
DATE	
SCALE	
WORK PACKAGE #	
PROJECT NO.	

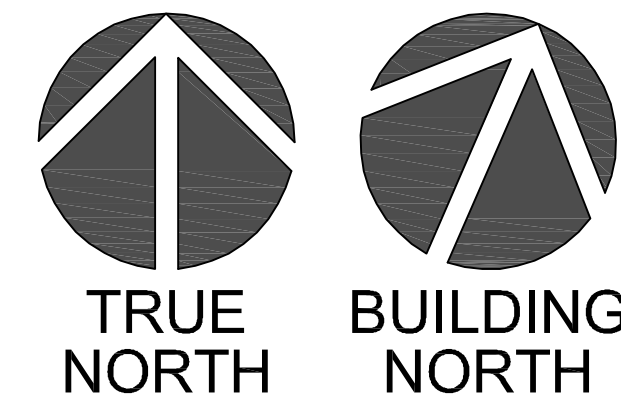
TITLE	DRAWING DOCUMENT CONTROL NUMBER	REVISION	DRAWING
NARROWS LAKE ADMINISTRATION & LEISURE KITCHEN & DINING ROOM SITE PLAN	NL1-45-BLD-00-0XX-#	P	A-3.1



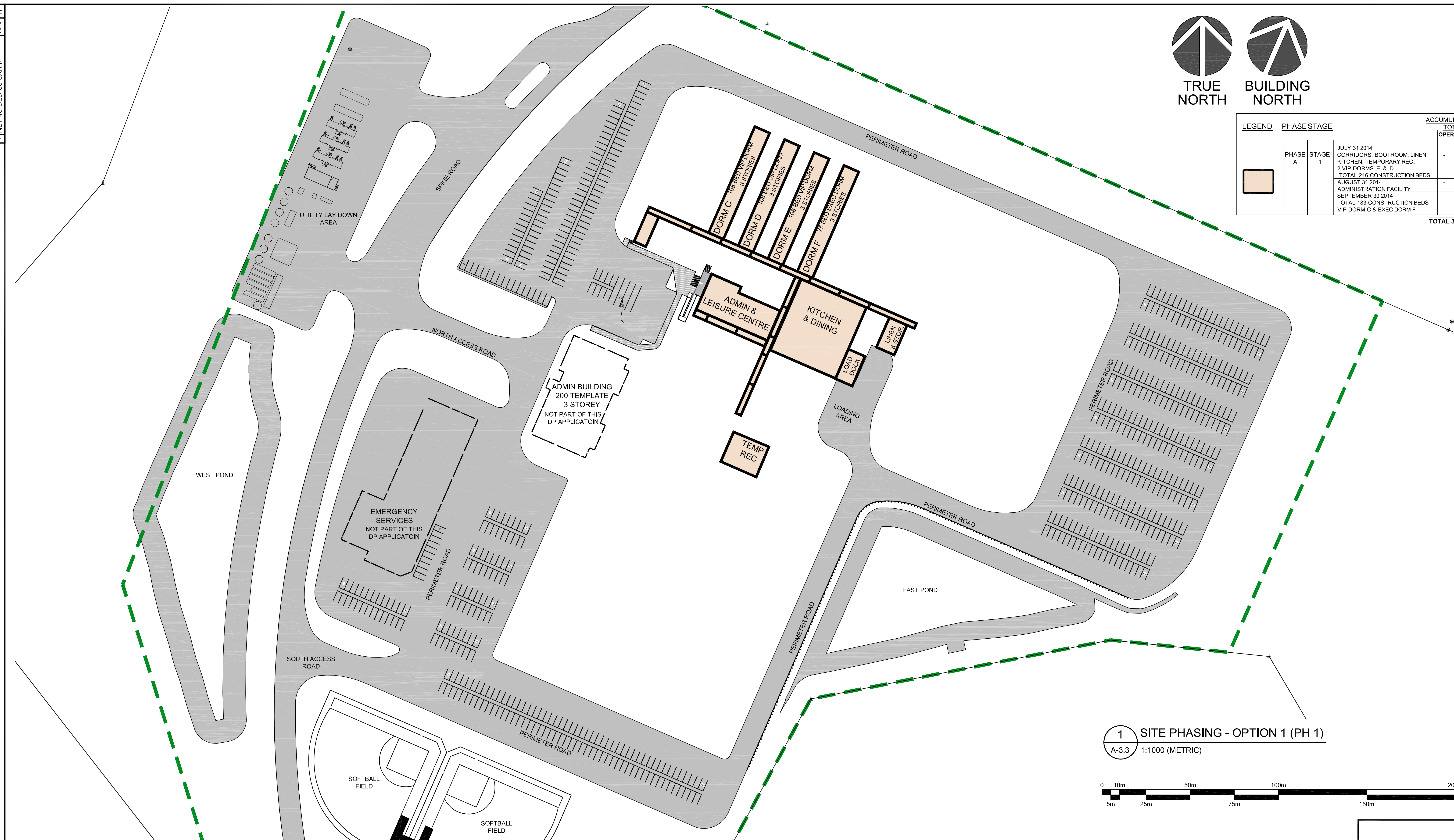




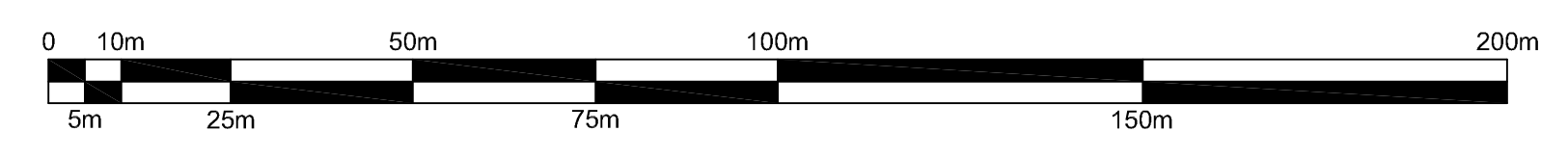
# NL1-45-BLD-00-0XX-#  
REV. H



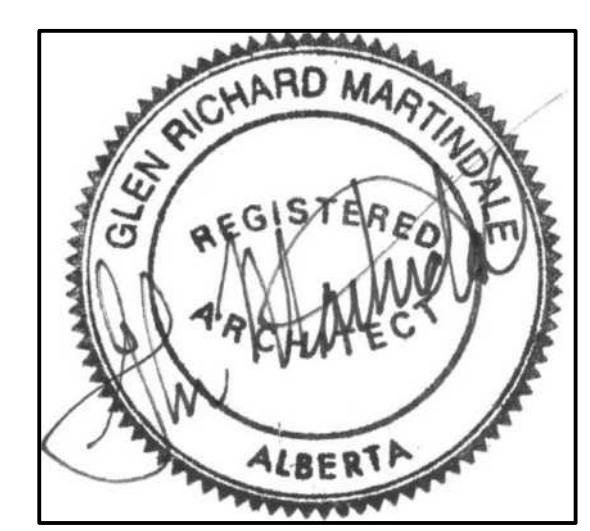
LEGEND	PHASE	STAGE	PHASE STAGE	ACCUMULATIVE TOTALS	
				OPER.	CONST.
[Orange Box]	A	1	JULY 31 2014 CORRIDORS, BOOTROOM, LINEN, KITCHEN, TEMPORARY REC, 2 VIP DORMS E & D TOTAL 216 CONSTRUCTION BEDS	-	216
			AUGUST 31 2014 ADMINISTRATION FACILITY	-	216
			SEPTEMBER 30 2014 TOTAL 183 CONSTRUCTION BEDS VIP DORM C & EXEC DORM F	-	399
			<b>TOTAL 399 BEDS</b>		



1 SITE PHASING - OPTION 1 (PH 1)  
A-3.3 1:1000 (METRIC)



DRAWING NUMBER	REFERENCE DRAWINGS	STAMPS



REV NO	REVISION	DATE	DRN	CKD	DES	LDE	PE	DESIGNED BY	CONSULTANT LOGO
A	ISSUED FOR REVIEW	13/05/22	XXX					RK	 Roman Kujath Architects 415 10357 109 Street Edmonton, Alberta T5J 1N3 P 780 420 1237 F 780 429 1498 E gmartindale@rkarchitects.ca
B	ISSUED FOR CLIENT REVIEW	13/07/17	AP/MM					AP / MM	
C	REVISED - ISSUED FOR PRICING	13/09/03	AP/MM					CHECKED BY GM	
D	REVISED -ISSUE FOR REVIEW	13/09/20	KD/MM	GM	GM	GM		LEAD DISC ENG	
E	ISSUED FOR DEVELOPMENT PERMIT	13/09/23	KD/MM	GM	GM	GM		PROJECT ENGINEER	
F	REVISED - ISSUED FOR PRICING	13/12/17	MM	GM	GM	GM		DATE 14/04/15	
G	REVISED - ISSUED FOR PRICING	14/03/03	MM	GM	GM	GM		SCALE 1:1000	
H	ISSUED FOR BUILDING PERMIT	14/04/15	MM	GM	GM	GM		WORK PACKAGE #	
								PROJECT NO. 1310	
								DRAWING DOCUMENT CONTROL NUMBER NL1-45-BLD-00-0XX-#	

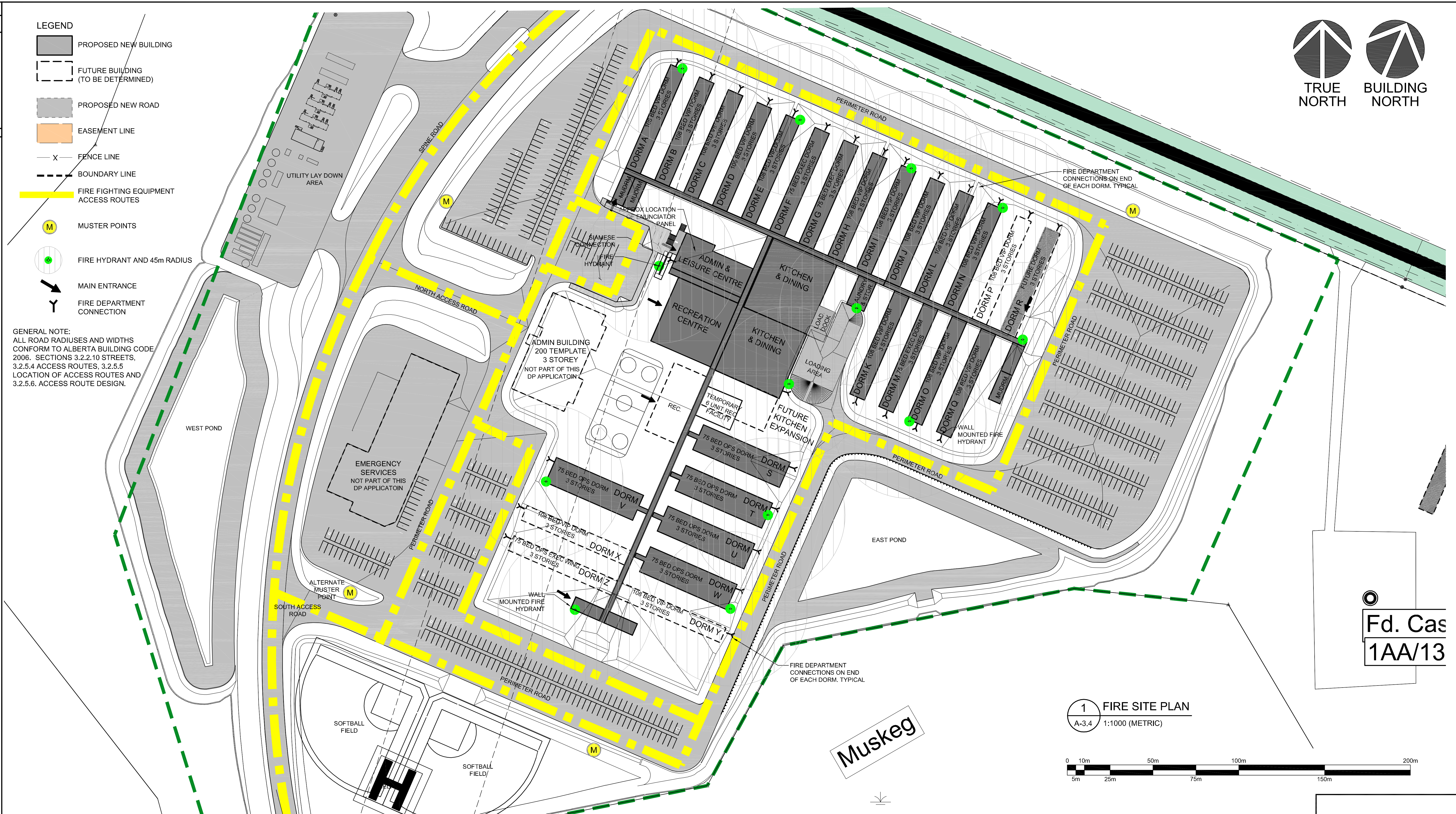
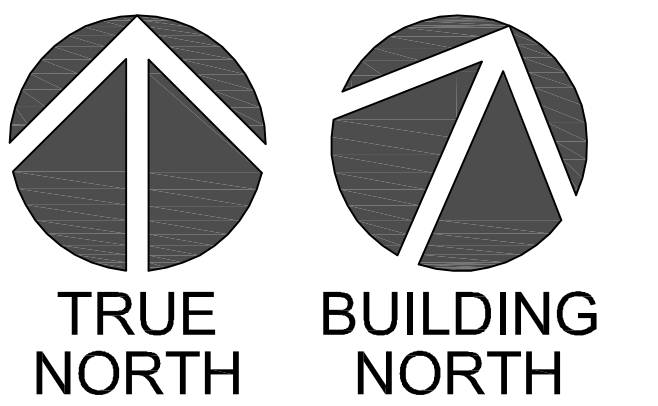
DESIGNED BY	CONSULTANT LOGO
RK	 Cenovus FCCL Ltd TITLE NARROWS LAKE SPORTS FACILITY / ADMINISTRATION & LEISURE KITCHEN & DINING ROOM SITE PHASING PLAN - OPTION 1 (PH. 1 ONLY)
DRAWN BY AP / MM	
CHECKED BY GM	
LEAD DISC ENG	
PROJECT ENGINEER	
DATE 14/04/15	
SCALE 1:1000	
WORK PACKAGE #	
PROJECT NO. 1310	
DRAWING DOCUMENT CONTROL NUMBER NL1-45-BLD-00-0XX-#	

REVISION	DRAWING
H	A-3.3



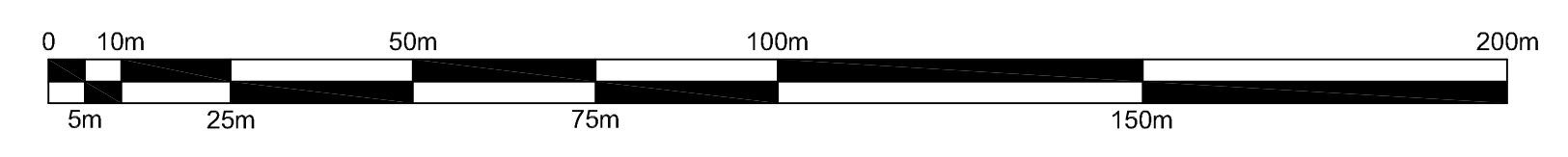
- LEGEND**
- PROPOSED NEW BUILDING
  - FUTURE BUILDING (TO BE DETERMINED)
  - PROPOSED NEW ROAD
  - EASEMENT LINE
  - FENCE LINE
  - BOUNDARY LINE
  - FIRE FIGHTING EQUIPMENT ACCESS ROUTES
  - MUSTER POINTS
  - FIRE HYDRANT AND 45m RADIUS
  - MAIN ENTRANCE
  - FIRE DEPARTMENT CONNECTION

**GENERAL NOTE:**  
ALL ROAD RADIIUSES AND WIDTHS CONFORM TO ALBERTA BUILDING CODE 2006. SECTIONS 3.2.2.10 STREETS, 3.2.5.4 ACCESS ROUTES, 3.2.5.5 LOCATION OF ACCESS ROUTES AND 3.2.5.6. ACCESS ROUTE DESIGN.

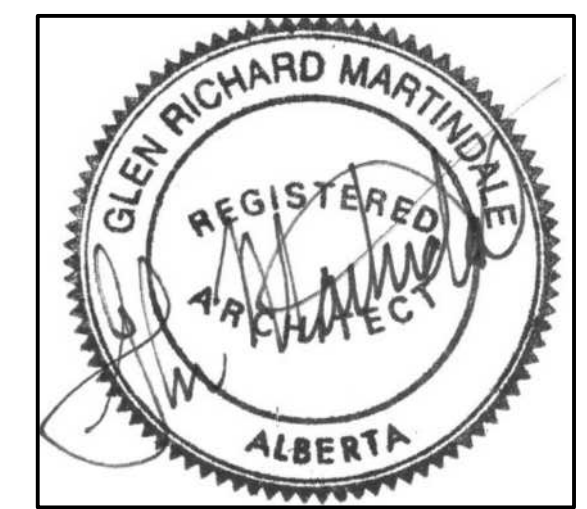


Fd. Cas  
1AA/13

**1 FIRE SITE PLAN**  
A-3.4 1:1000 (METRIC)



DRAWING NUMBER	REFERENCE DRAWINGS	STAMPS



REV NO	REVISION	DATE	DRN	CKD	DES	LDE	PE
D	ISSUED FOR CLIENT INFORMATION / E.R.P.	13/09/18	MM/KD		GM	GM	
E	REVISED - ISSUED FOR DEVELOPMENT PERMIT	13/09/20	MM	GM	GM	GM	
F	ISSUED FOR DEVELOPMENT PERMIT	13/09/23	MM	GM	GM	GM	
G	REVISED - ISSUED FOR DEVELOPMENT PERMIT	13/09/24	MM	GM	GM	GM	
H	REVISED - ISSUED FOR DEVELOPMENT PERMIT	13/10/08	MM	GM	GM	GM	
I	REVISED - ISSUED FOR PRICING	13/12/02	MM	GM	GM	GM	
J	REVISED - ISSUED FOR PRICING	13/12/17	MM	GM	GM	GM	
K	ISSUED FOR BUILDING PERMIT	14/04/15	MM	GM	GM	GM	

DESIGNED BY RK	CONSULTANT LOGO 
DRAWN BY MM	Roman Kujath Architects 415 10357 109 Street Edmonton, Alberta T5J 1N3 P 780 420 1237 F 780 429 1498 E gmartindale@rkarchitects.ca
CHECKED BY GM	
LEAD DISC ENG	PROJECT ENGINEER
DATE 14/04/15	CADD FILE NAME
SCALE 1: 1000	PROJECT NO. 1310
WORK PACKAGE #	

**cenovus ENERGY**  
Cenovus FCCL Ltd

**NARROWS LAKE  
ADMINISTRATION & LEISURE  
KITCHEN & DINING ROOM  
FIRE SITE PLAN**

DRAWING DOCUMENT CONTROL NUMBER NL1-45-BLD-00-0XX-#	REVISION K	DRAWING A-3.4
--	---------------	------------------





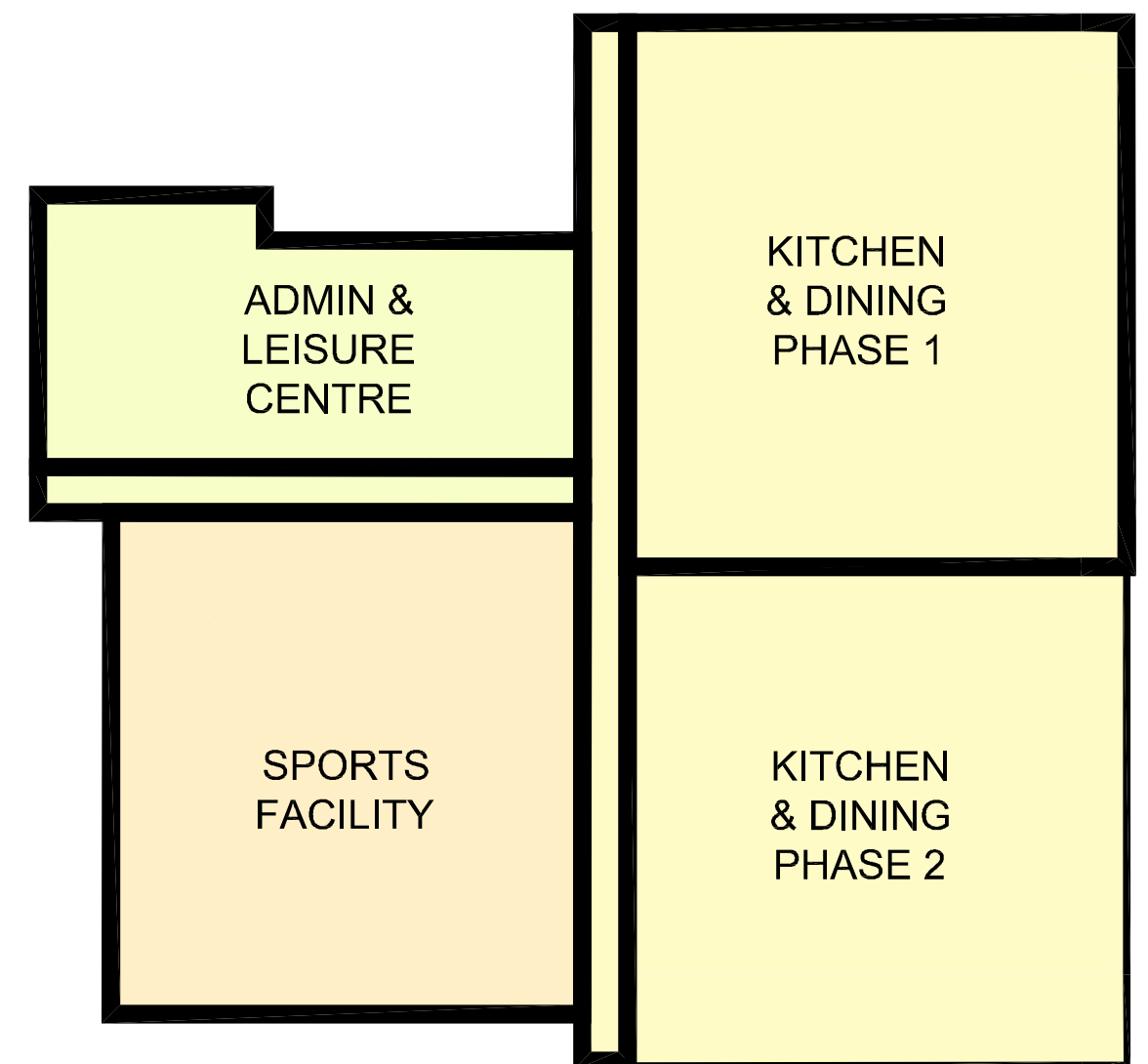
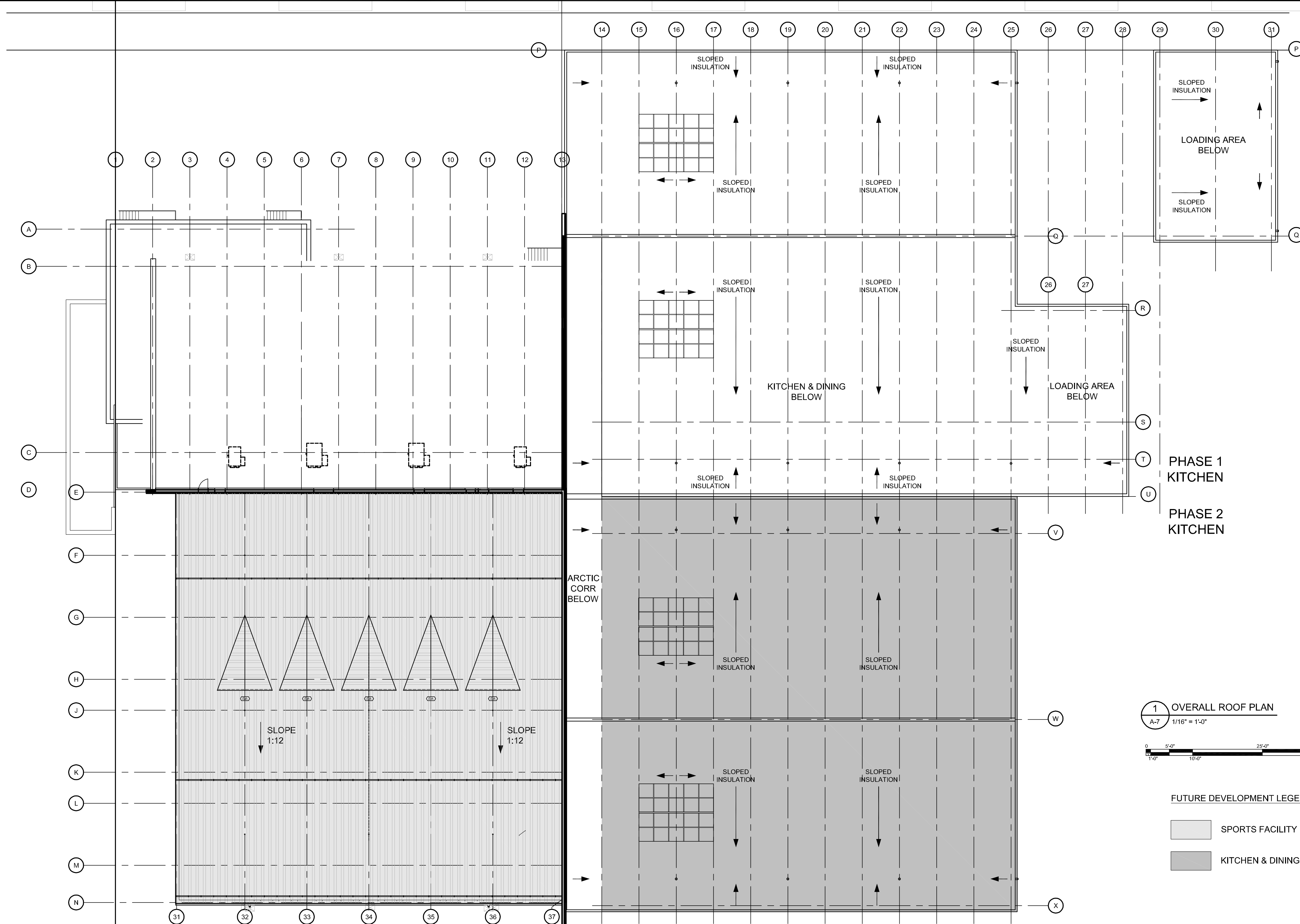










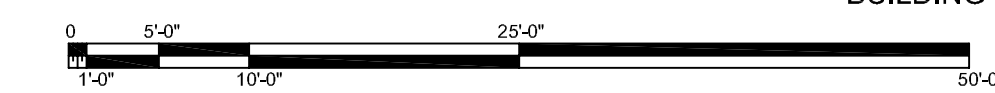


OVERALL RECREATION CENTRE  
KEY PLAN



PHASE 1  
KITCHEN  
PHASE 2  
KITCHEN

1 OVERALL ROOF PLAN  
A-7 1/16" = 1'-0"



FUTURE DEVELOPMENT LEGEND

- SPORTS FACILITY
- KITCHEN & DINING PH. 2

DRAWING NUMBER	REFERENCE DRAWINGS	STAMPS



REV NO	REVISION	DATE	DRN	CKD	DES	LDE	PE
G	ISSUED FOR CLIENT REVIEW	13/06/17	AP		GM	GM	
B	ISSUED FOR PRICING	13/07/15	AP/MM	GM			
C	REVISED - ISSUED FOR PRICING	13/09/03	AP/MM	GM	GM		
D	ISSUED FOR DEVELOPMENT PERMIT	13/09/23	AP/MM	GM	GM	GM	
E	REVISED - ISSUED FOR PRICING	13/10/18	MM		GM	GM	
F	REVISED - ISSUED FOR PRICING	13/12/04	MM	GM	GM	GM	
G	ISSUED FOR BUILDING PERMIT	14/04/15	MM	GM	GM	GM	

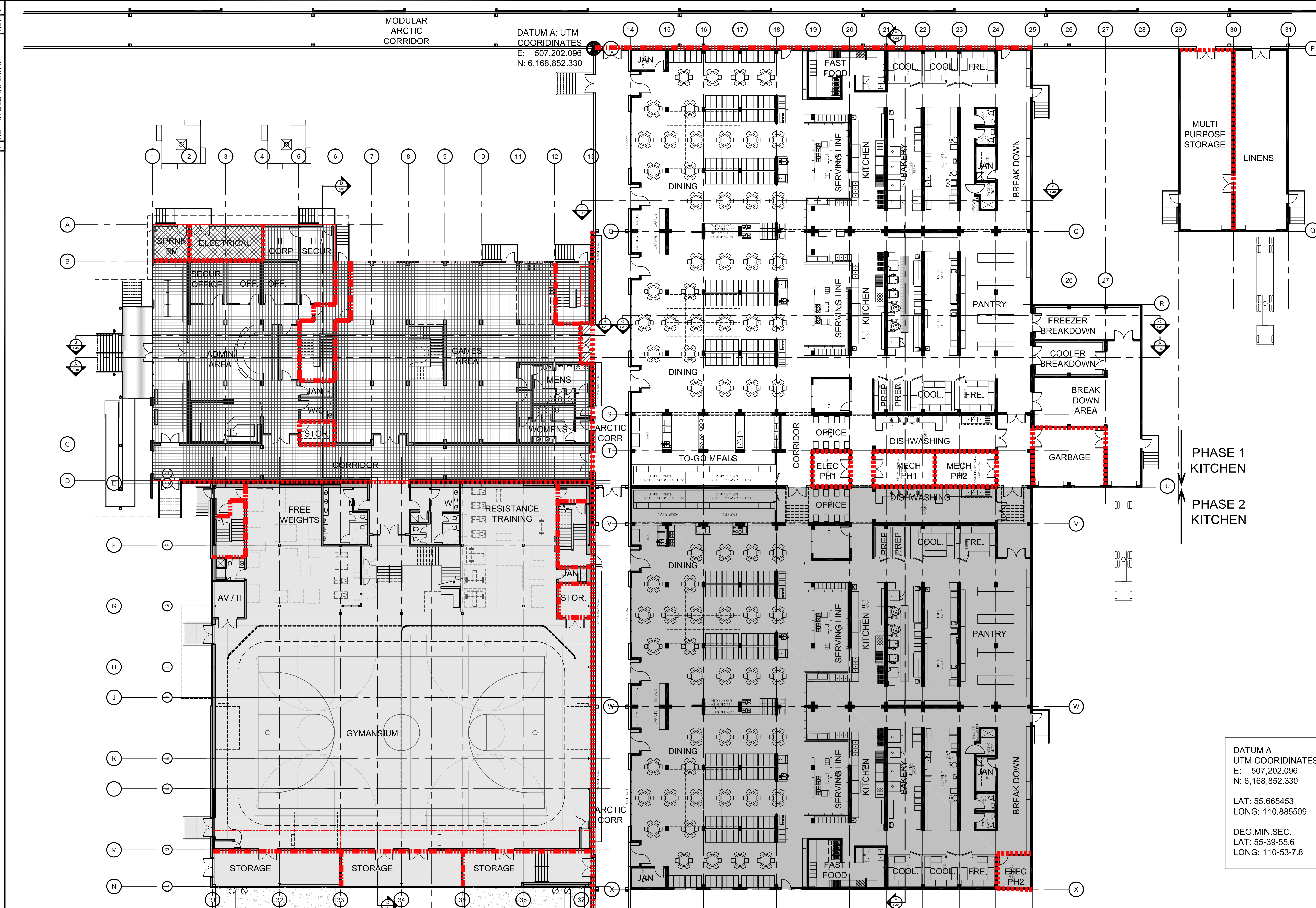
DESIGNED BY RK	CONSULTANT LOGO 
DRAWN BY AP / MM	Roman Kujath Architects 415 10357 109 Street Edmonton, Alberta T5J 1N3 P 780 420 1237 F 780 429 1498 E gmartindale@rkarchitects.ca
CHECKED BY GM	
LEAD DISC ENG	DATE 14/04/15
PROJECT ENGINEER	SCALE 1/16" = 1'-0"
WORK PACKAGE #	CADD FILE NAME
PROJECT NO. 1310	DRAWING DOCUMENT CONTROL NUMBER NL1-45-BLD-00-0XX-#

Cenovus FCCL Ltd

**NARROWS LAKE  
ADMINISTRATION & LEISURE  
KITCHEN & DINING ROOM  
OVERALL ROOF PLAN**

DRAWING DOCUMENT CONTROL NUMBER NL1-45-BLD-00-0XX-#	REVISION G	DRAWING A-7
--	---------------	----------------





**FIRE CAULKING AND FIRE STOPPING NOTE:**  
 ALL PENETRATIONS MECHANICAL OR ELECTRICAL OR BUILDING, MUST BE FIRE-CAULKED/SEALED WITH ULC APPROVED FIRE CAULKING AND/OR SEALING SYSTEM AND INSTALLED BY CERTIFIED INSTALLERS. ALL FIRE STOPPING SYSTEMS AT FLOOR OR ROOF DECKS MUST BE AN APPROVED ULC SYSTEM. C/W FIRE CAULKING AND STEEL DECK CLOSER. SAME GA. AS DECKING AND BE INSTALLED BY CERTIFIED INSTALLER

**FIRE RESISTANCE RATING LEGEND**

- 45 MIN FIRE RESISTANCE RATING - WALL ASSEMBLY & SEPARATION
- 1 HOUR FIRE RESISTANCE RATING - WALL ASSEMBLY & SEPARATION
- 2 HOUR FIRE RESISTANCE RATING - WALL ASSEMBLY & SEPARATION
- 45 MIN. FIRE RESISTANCE RATING - HORIZONTAL FIRE SEPARATION, BETWEEN MAIN FLOOR AND SECOND FLOOR AND BETWEEN CRAWL SPACE AND MAIN FLOOR. 45 MIN. FIRE RESISTANCE RATING REQUIRED FOR SUPPORTING STRUCTURE BELOW A RATED FLOOR. STRUCTURAL COLUMNS, BEAMS, AND JOISTS TO BE RATED.
- 1 HOUR FIRE RESISTANCE RATING - HORIZONTAL FLOOR ASSEMBLY FIRE SEPARATION, BETWEEN MAIN FLOOR AND SECOND FLOOR AND BETWEEN CRAWL SPACE AND MAIN FLOOR. 1 HOUR FIRE RESISTANCE RATING REQUIRED FOR SUPPORTING STRUCTURE BELOW A RATED FLOOR. STRUCTURAL COLUMNS, BEAMS, AND JOISTS TO BE RATED.
- 2 HOUR FIRE RESISTANCE RATING - HORIZONTAL FLOOR ASSEMBLY FIRE SEPARATION. 2 HOUR FIRE RESISTANCE RATING REQUIRED FOR SUPPORTING STRUCTURE BELOW A RATED FLOOR. STRUCTURAL COLUMNS, BEAMS & JOISTS TO BE RATED.

PHASE 1 KITCHEN  
 PHASE 2 KITCHEN

DATUM A  
 UTM COORDINATES  
 E: 507,202.096  
 N: 6,168,852.330

LAT: 55.665453  
 LONG: 110.885509

DEG. MIN. SEC.  
 LAT: 55-39-55.6  
 LONG: 110-53-7.8

**1 MAIN FLOOR FIRE PLAN**  
 A-8 1/16" = 1'-0"

BUILDING NORTH  
 TRUE NORTH

DRAWING NUMBER	REFERENCE DRAWINGS	STAMPS



REV NO	REVISION	DATE	DRN	CKD	DES	LDE	PE
B	ISSUED FOR CLIENT REVIEW	13/06/17	AP		GM	GM	
B	ISSUED FOR PRICING	13/07/15	AP/MM		GM	GM	
C	REVISED - ISSUED FOR PRICING	13/09/03	AP/MM		GM	GM	
D	ISSUED FOR DEVELOPMENT PERMIT	13/09/23	AP/MM		GM	GM	
E	REVISED - ISSUED FOR PRICING	13/12/04	MM		GM	GM	
F	ISSUED FOR BUILDING PERMIT	14/04/15	MM		GM	GM	

DESIGNED BY	CONSULTANT LOGO
RK	 Roman Kujath Architects 415 10357 106 Street Edmonton, Alberta T5J 1N3 P 780 420 1237 F 780 429 1498 E gmartindale@rkarchitects.ca
DRAWN BY	
CHECKED BY	
LEAD DISC ENG	
PROJECT ENGINEER	
DATE	
SCALE	CADD FILE NAME
1/16" = 1'-0"	
WORK PACKAGE #	PROJECT NO.
	1310

**cenovus ENERGY**  
 Cenovus FCCL Ltd

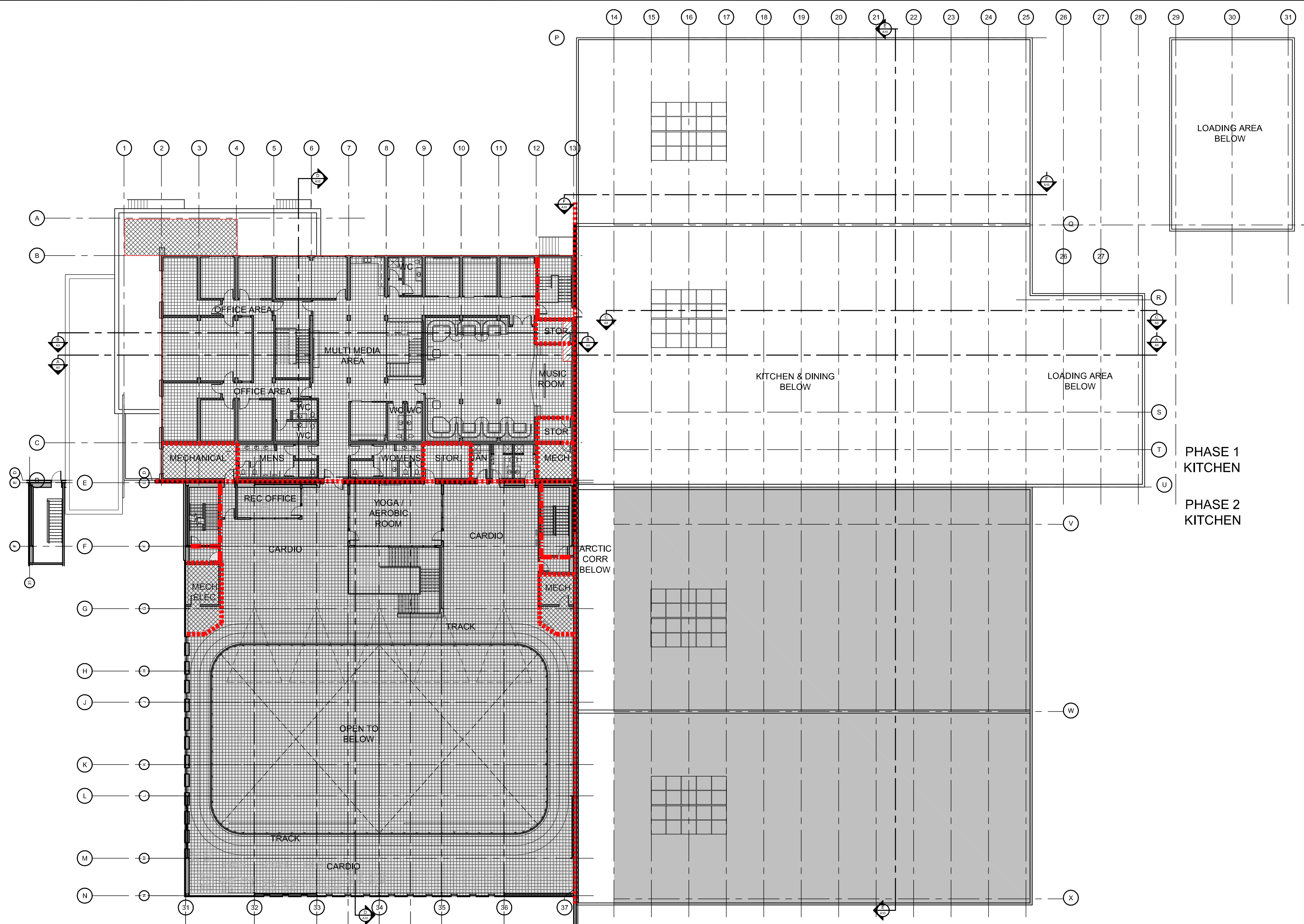
**TITLE**  
 NARROWS LAKE  
 ADMINISTRATION & LEISURE  
 KITCHEN & DINING ROOM  
 OVERALL FIRE PLAN - MAIN

DRAWING DOCUMENT CONTROL NUMBER  
 NL1-45-BLD-00-0XX-#

REVISION  
 F

DRAWING  
 A-8





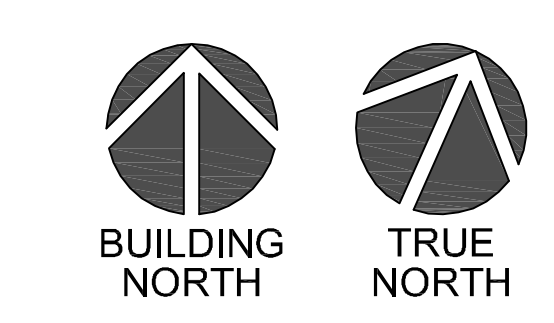
**FIRE CAULKING AND FIRE STOPPING NOTE:**  
 ALL PENETRATIONS MECHANICAL OR ELECTRICAL OR BUILDING, MUST BE FIRE-CAULKED/SEALED WITH ULC APPROVED FIRE CAULKING AND/OR SEALING SYSTEM AND INSTALLED BY CERTIFIED INSTALLERS. ALL FIRE STOPPING SYSTEMS AT FLOOR OR ROOF DECKS MUST BE AN APPROVED ULC SYSTEM. C/W FIRE CAULKING AND STEEL DECK CLOSER. SAME GA. AS DECKING AND BE INSTALLED BY CERTIFIED INSTALLER

**FIRE RESISTANCE RATING LEGEND**

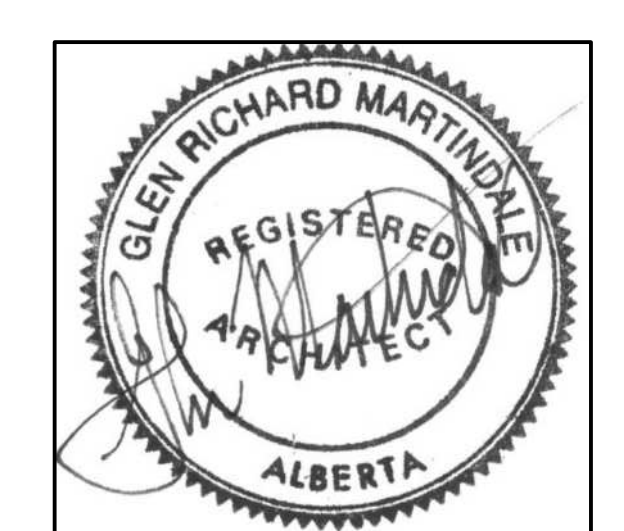
- 45 MIN FIRE RESISTANCE RATING - WALL ASSEMBLY & SEPARATION
- 1 HOUR FIRE RESISTANCE RATING - WALL ASSEMBLY & SEPARATION
- 2 HOUR FIRE RESISTANCE RATING - WALL ASSEMBLY & SEPARATION
- 45 MIN. FIRE RESISTANCE RATING - HORIZONTAL FIRE SEPARATION, BETWEEN MAIN FLOOR AND SECOND FLOOR AND BETWEEN CRAWL SPACE AND MAIN FLOOR. 45 MIN. FIRE RESISTANCE RATING REQUIRED FOR SUPPORTING STRUCTURE BELOW A RATED FLOOR. STRUCTURAL COLUMNS, BEAMS, AND JOISTS TO BE RATED.
- 1 HOUR FIRE RESISTANCE RATING - HORIZONTAL FLOOR ASSEMBLY FIRE SEPARATION, BETWEEN MAIN FLOOR AND SECOND FLOOR AND BETWEEN CRAWL SPACE AND MAIN FLOOR. 1 HOUR FIRE RESISTANCE RATING REQUIRED FOR SUPPORTING STRUCTURE BELOW A RATED FLOOR. STRUCTURAL COLUMNS, BEAMS, AND JOISTS TO BE RATED.
- 2 HOUR FIRE RESISTANCE RATING - HORIZONTAL FLOOR ASSEMBLY FIRE SEPARATION. 2 HOUR FIRE RESISTANCE RATING REQUIRED FOR SUPPORTING STRUCTURE BELOW A RATED FLOOR. STRUCTURAL COLUMNS, BEAMS & JOISTS TO BE RATED.

PHASE 1 KITCHEN  
 PHASE 2 KITCHEN

**1 SECOND FLOOR FIRE PLAN**  
 A-9 1/16" = 1'-0"



DRAWING NUMBER	REFERENCE DRAWINGS	STAMPS



REV NO	REVISION	DATE	DRN	CKD	DES	LDE	PE
A	ISSUED FOR CLIENT REVIEW	13/06/17	AP		GM	GM	
B	ISSUED FOR PRICING	13/07/15	AP/MM	GM			
C	REVISED - ISSUED FOR PRICING	13/09/03	AP/MM	GM	GM	GM	
D	ISSUED FOR DEVELOPMENT PERMIT	13/09/23	AP/MM	GM	GM	GM	
E	REVISED - ISSUED FOR PRICING	13/12/04	MM	GM	GM	GM	
F	ISSUED FOR BUILDING PERMIT	14/04/15	MM	GM	GM	GM	

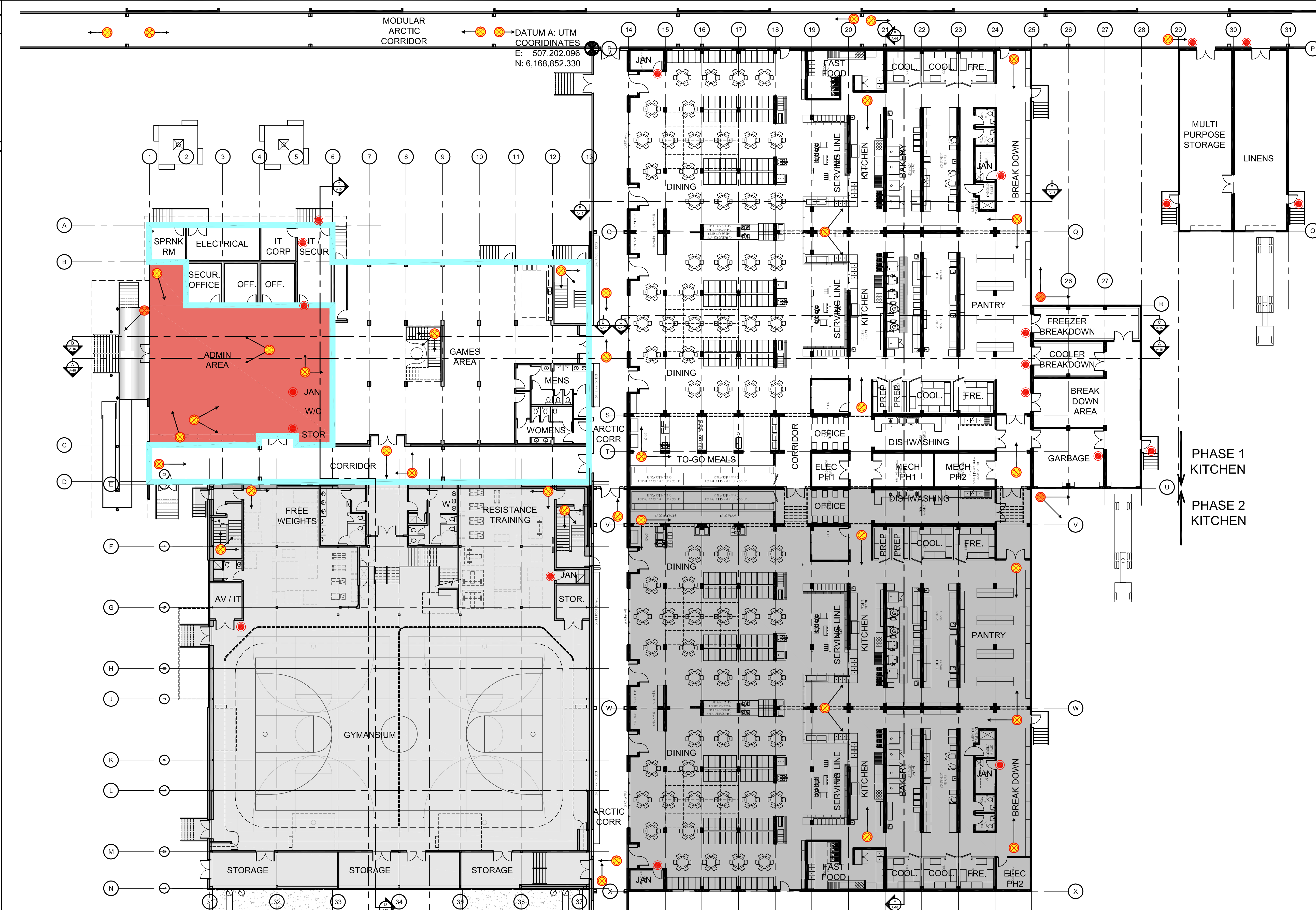
DESIGNED BY RK	CONSULTANT LOGO 
DRAWN BY AP / MM	
CHECKED BY GM	
LEAD DISC ENG	
PROJECT ENGINEER	
DATE 14/04/15	
SCALE 1/16" = 1'-0"	
WORK PACKAGE #	

**cenovus ENERGY**  
 Cenovus FCCL Ltd

**NARROWS LAKE  
 ADMINISTRATION & LEISURE  
 KITCHEN & DINING ROOM  
 OVERALL FIRE PLAN - SECOND**

DRAWING DOCUMENT CONTROL NUMBER: NL1-45-BLD-00-0XX-#  
 REVISION: F  
 DRAWING: A-9





**GENERAL NOTES:**  
 ALL CARD SWIPES AND CAMERAS ARE SUPPLIED AND INSTALLED BY CENOVUS. ALL CONDUIT/ELECTRICAL/CAT 6 IS BY DESIGN BUILD GENERAL CONTRACTOR.

**SECURITY ZONES LEGEND**

- ZONE 1: LINE OF BUILDING SECURITY ZONE - OPEN TO ACCESS WITHOUT CARD SWIPE DURING NORMAL OPERATING HOURS
- ZONE 2: PUBLIC ZONE / SERVICE COUNTER

**BUILDING ENTRANCES**

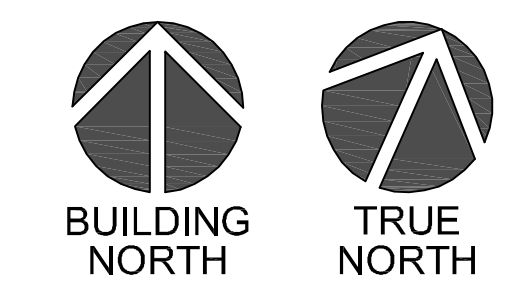
- CARD SWIPE ENTRY / EXIT
- DOOR SENSOR (WIRED FOR POTENTIAL READER)
- ROUGH IN FOR FUTURE CARD SWIPE

**ADDITIONAL SECURITY**

- 1MP SECURITY CAMERA LOCATION & CAMERA SIGHT LINES
- 3MP SECURITY CAMERA LOCATION & CAMERA SIGHT LINES
- HD PTZ SECURITY CAMERA LOCATION 360° VIEW

NOTE: SEE SITE PLAN DRAWING A-3.1 FOR ALL EXTERIOR CAMERA LOCATIONS

**1 MAIN FLOOR SECURITY PLAN**  
 A-10 1/16" = 1'-0"



DRAWING NUMBER	REFERENCE DRAWINGS	STAMPS



REV NO	REVISION	DATE	DRN	CKD	DES	LDE	PE
A	ISSUED FOR PRICING	13/09/03	MM		GM	GM	
B	REVISED - ISSUED FOR PRICING	14/01/13	MM		GM	GM	
C	REVISED - ISSUED FOR PRICING	14/01/14	MM		GM	GM	
D	ISSUED FOR BUILDING PERMIT	14/04/15	MM	GM	GM	GM	

DESIGNED BY RK	CONSULTANT LOGO 
DRAWN BY MM	Roman Kujath Architects 415 10357 109 Street Edmonton, Alberta T5J 1N3 P 780 420 1237 F 780 429 1498 E gmartindale@rkarchitects.ca
CHECKED BY GM	PROJECT ENGINEER
LEAD DISC ENG	DATE 14/04/15
PROJECT ENGINEER	SCALE 1/16" = 1'-0"
DATE 14/04/15	CADD FILE NAME Overall Floor Plan
SCALE 1/16" = 1'-0"	WORK PACKAGE #
WORK PACKAGE #	PROJECT NO. 1310

**cenovus ENERGY**  
 Cenovus FCCL Ltd

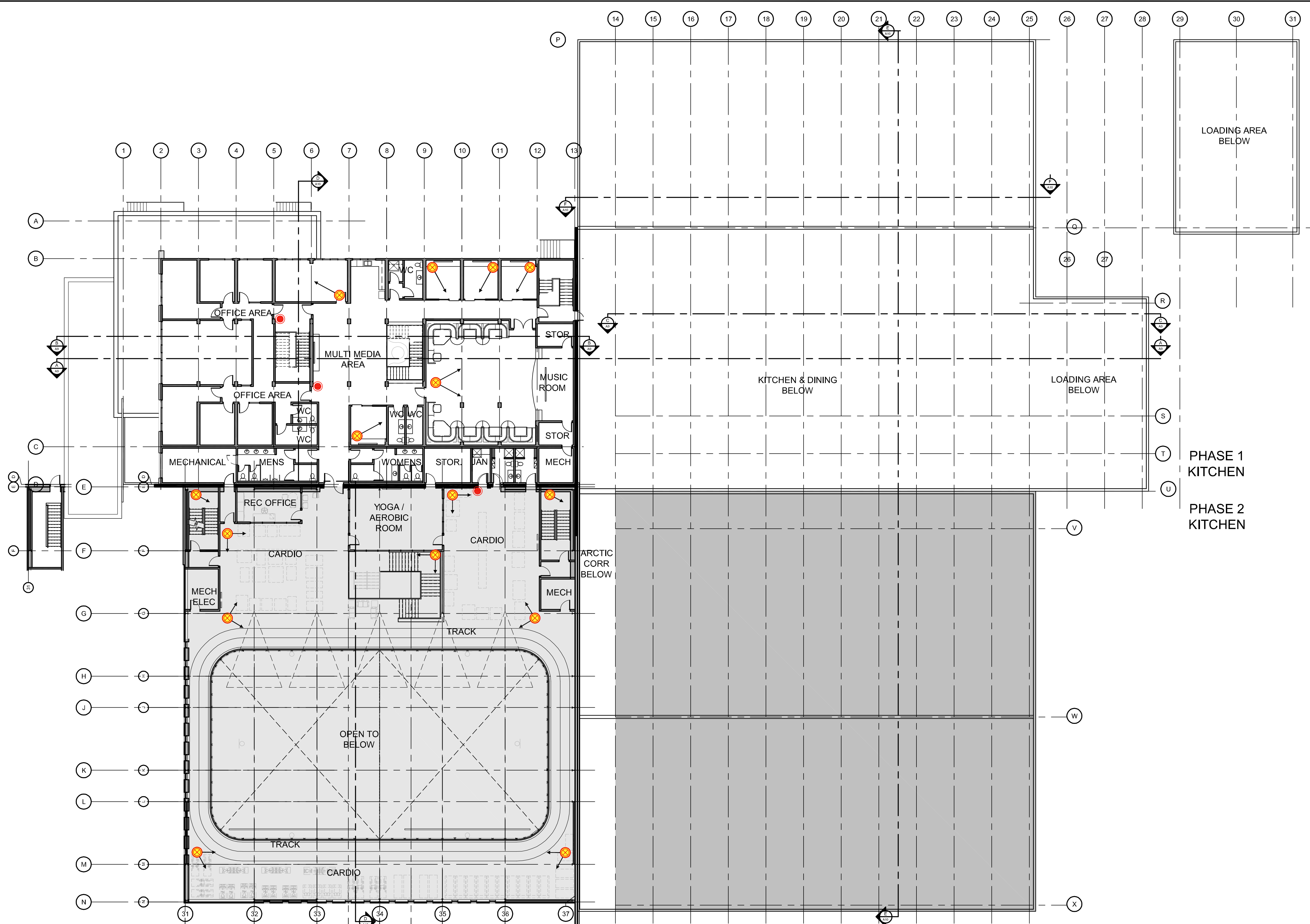
**NARROWS LAKE**  
 SPORTS FACILITY / ADMINISTRATION & LEISURE  
 KITCHEN & DINING ROOM  
 OVERALL SECURITY PLAN - MAIN

DRAWING DOCUMENT CONTROL NUMBER  
 NL1-45-BLD-00-0XX-#

REVISION  
 D

DRAWING  
 A-10





**GENERAL NOTES:**  
 ALL CARD SWIPES AND CAMERAS ARE SUPPLIED AND INSTALLED BY CENOVUS. ALL CONDUIT/ELECTRIAC/CAT 6 IS BY DESIGN BUILD GENERAL CONTRACTOR.

**SECURITY ZONES LEGEND**

ZONE 1: LINE OF BUILDING SECURITY ZONE - OPEN TO ACCESS WITHOUT CARD SWIPE DURING NORMAL OPERATING HOURS  
 ZONE 2: PUBLIC ZONE / SERVICE COUNTER

**BUILDING ENTRANCES**

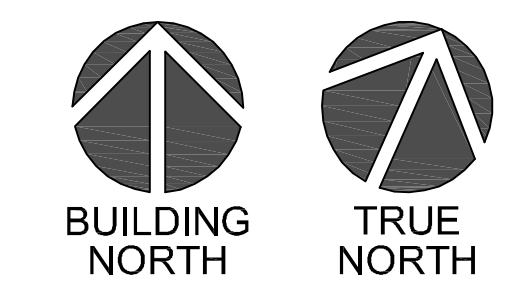
- CARD SWIPE ENTRY / EXIT
- DOOR SENSOR (WIRED FOR POTENTIAL READER)
- ROUGH IN FOR FUTURE CARD SWIPE

**ADDITIONAL SECURITY**

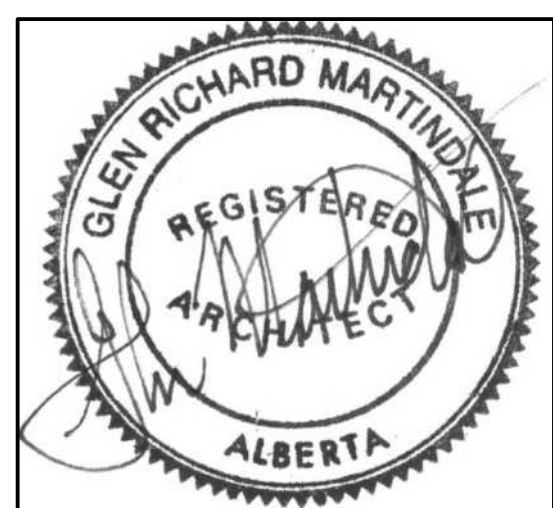
- 1MP SECURITY CAMERA LOCATION & CAMERA SIGHT LINES
- 3MP SECURITY CAMERA LOCATION & CAMERA SIGHT LINES
- HD PTZ SECURITY CAMERA LOCATION 360° VIEW

NOTE: SEE SITE PLAN DRAWING A-3.1 FOR ALL EXTERIOR CAMERA LOCATIONS

**1 SECOND FLOOR SECURITY PLAN**  
 A-11 1/16" = 1'-0"



DRAWING NUMBER	REFERENCE DRAWINGS	STAMPS



REV NO	REVISION	DATE	DRN	CKD	DES	LDE	PE
A	ISSUED FOR PRICING	13/09/03	MM		GM	GM	
B	REVISED - ISSUED FOR PRICING	14/01/13	MM		GM	GM	
C	REVISED - ISSUED FOR PRICING	14/01/14	MM		GM	GM	
D	ISSUED FOR BUILDING PERMIT	14/04/15	MM	GM	GM	GM	

DESIGNED BY RK	CONSULTANT LOGO 
DRAWN BY MM	Roman Kujath Architects 415 10357 109 Street Edmonton, Alberta T5J 1N3 P 780 420 1237 F 780 429 1498 E gmartindale@rkarchitects.ca
CHECKED BY GM	PROJECT ENGINEER
LEAD DISC ENG	DATE 14/04/15
PROJECT ENGINEER	SCALE 1/16" = 1'-0"
DATE	CADD FILE NAME Overall Floor Plans
SCALE	WORK PACKAGE #
WORK PACKAGE #	PROJECT NO. 1310

**cenovus**  
ENERGY

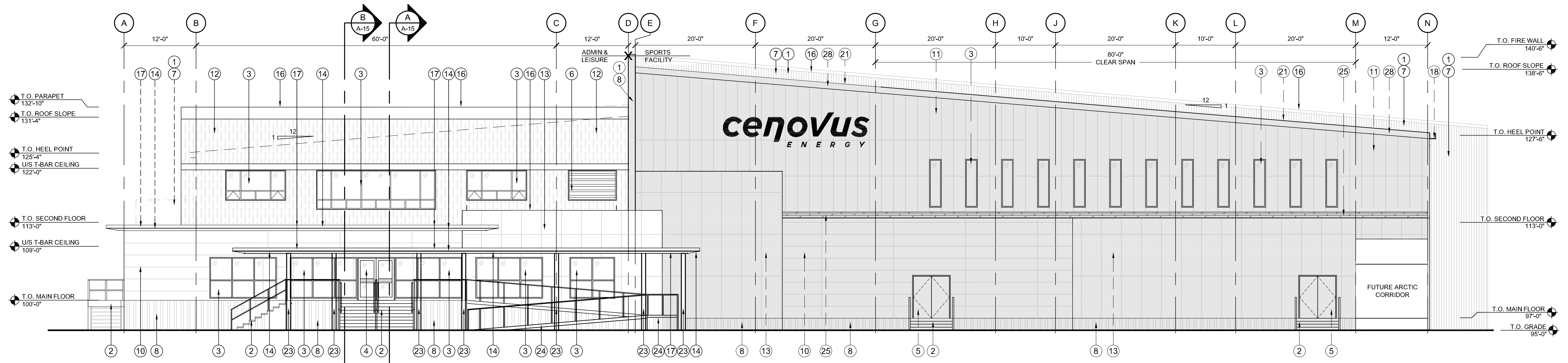
Cenovus FCCL Ltd

**TITLE**

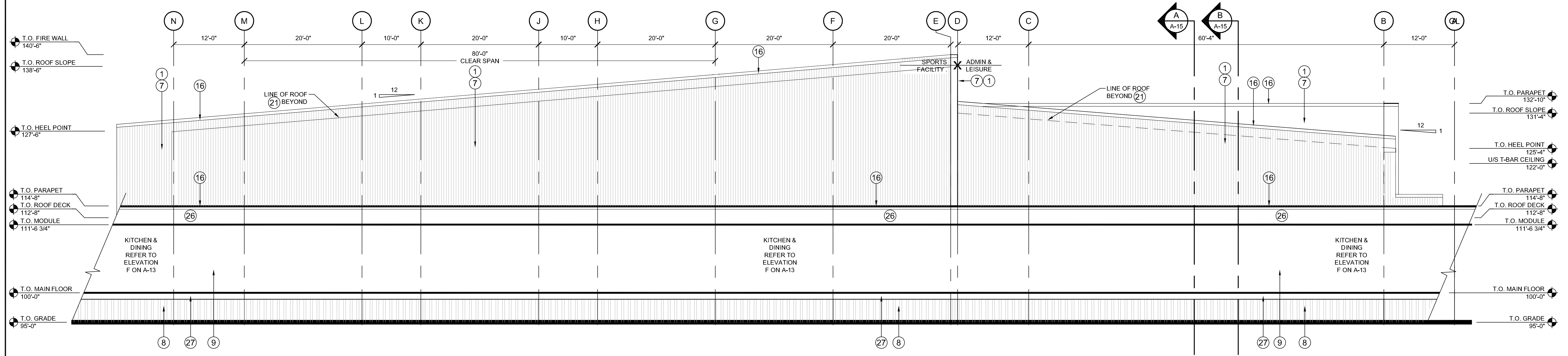
**NARROWS LAKE**  
**SPORTS FACILITY / ADMINISTRATION & LEISURE**  
**KITCHEN & DINING ROOM**  
**OVERALL SECURITY PLAN - SECOND**

DRAWING DOCUMENT CONTROL NUMBER NL1-45-BLD-00-0XX-#	REVISION D	DRAWING A-11
--	---------------	-----------------



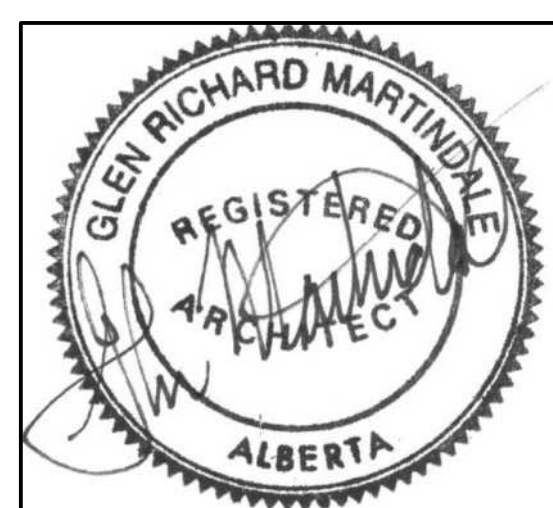


**A WEST ELEVATION**  
A-12 1/8" = 1'-0"



**B EAST ELEVATION**  
A-12 1/8" = 1'-0"

DRAWING NUMBER	REFERENCE DRAWINGS	STAMPS



REV NO	REVISION	DATE	DRN	CKD	DES	LDE	PE
A	ISSUED FOR CLIENT REVIEW	13/06/17					
B	ISSUED FOR PRICING	13/07/15	AP/MM	GM			
C	REVISED - ISSUED FOR PRICING	13/09/03	AP/MM	GM		GM	
D	ISSUED FOR DEVELOPMENT PERMIT	13/09/23	AP/MM	GM	GM	GM	
E	REVISED - ISSUED FOR PRICING	14/01/24	MM	GM	GM	GM	
F	ISSUED FOR BUILDING PERMIT	14/04/15	MM	GM	GM	GM	

DESIGNED BY RK	CONSULTANT LOGO 
DRAWN BY AP / MM	Romen Kujath Architects 415 10357 109 Street Edmonton, Alberta T5J 1N3 P 780 420 1237 F 780 429 1498 E gmartindale@rkarchitects.ca
CHECKED BY GM	
LEAD DISC ENG	DATE 14/04/15
PROJECT ENGINEER	SCALE 1/8" = 1'-0"
WORK PACKAGE #	CADD FILE NAME
	PROJECT NO. 1310

**ceNovus ENERGY**  
Novovus FCCL Ltd

**TITLE**  
NARROWS LAKE  
SPORTS FACILITY / ADMINISTRATION & LEISURE  
KITCHEN & DINING ROOM  
OVERALL BUILDING ELEVATIONS

DRAWING DOCUMENT CONTROL NUMBER  
NL1-45-BLD-00-0XX-#

REVISION  
F

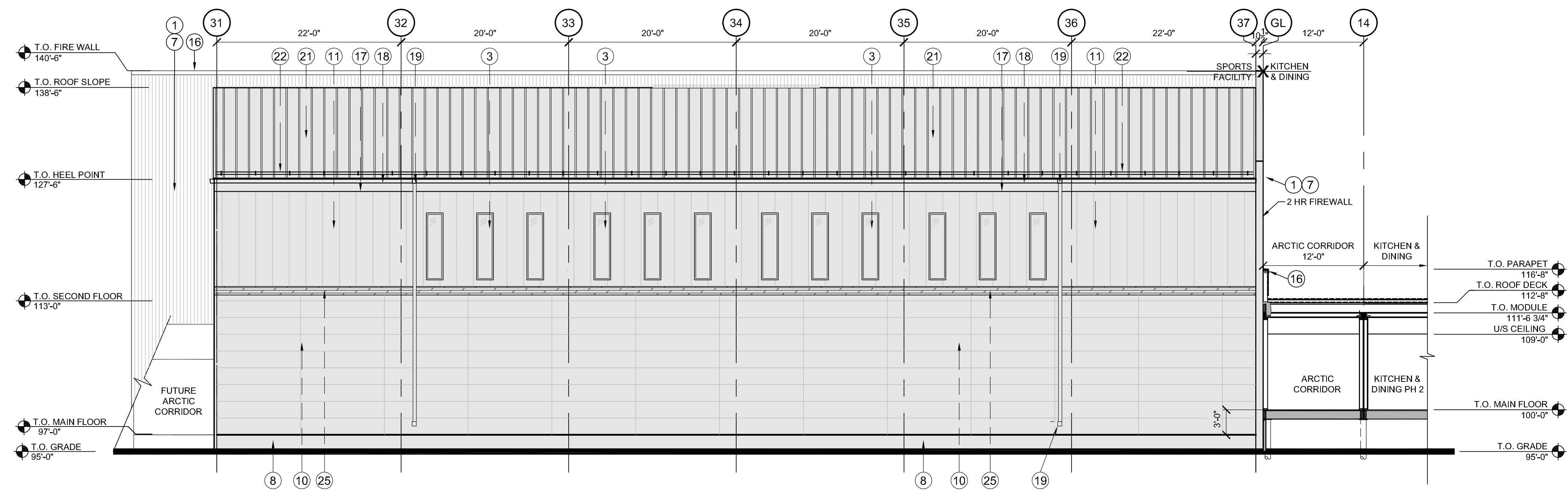
DRAWING  
A-12



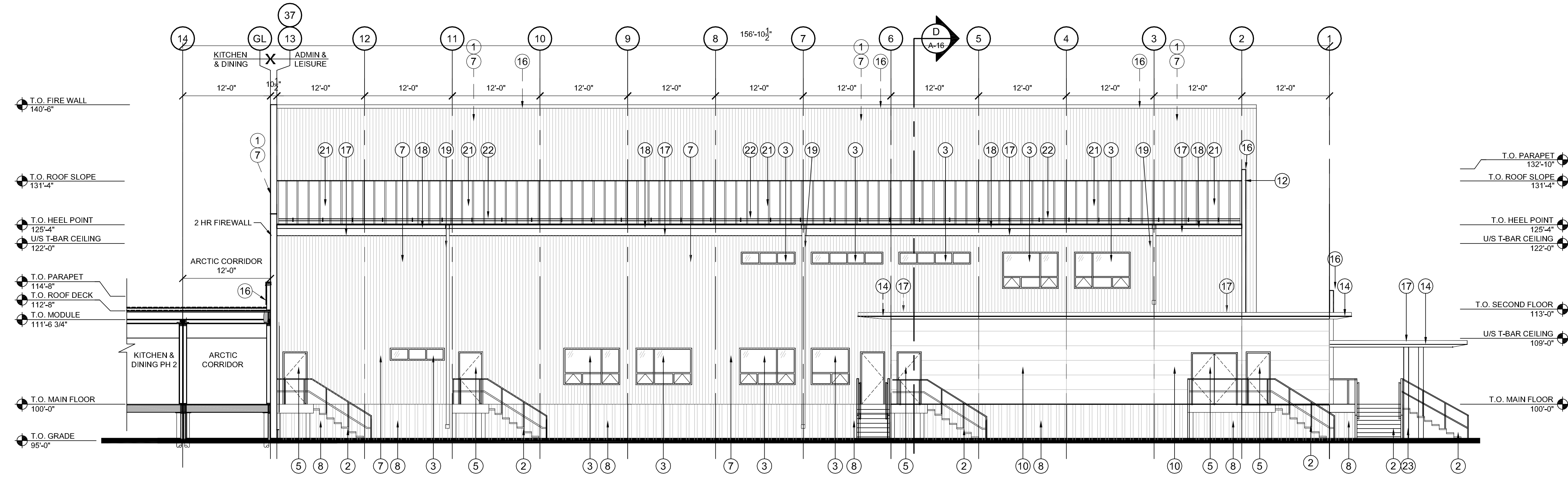
**FUTURE DEVELOPMENT LEGEND**

- SPORTS FACILITY
- KITCHEN & DINING PH 2
- PHASE 1 KEYNOTE (IN CONTRACT)
- FUTURE PHASE KEYNOTE (NOT IN CONTRACT)

- LEGEND**
- 2 HR. FIRE WALL W/ METAL SIDING FINISH AS PER ITEM 8
  - STEEL GRATING STAIR AND LANDING. COMPLETE WITH STEEL RAILING AND GUARD RAIL.
  - ALUMINUM CURTAIN WALL WINDOW. CLEAR ANODIZED ALUMINUM FINISH. CW 3/8" THICK FORMED ALUMINUM FLASHING.
  - ALUMINUM DOOR AND DOOR FRAME. CLEAR ANODIZED ALUMINUM. CW 3/8" THICK FORMED ALUMINUM FLASHING.
  - PRESSED STEEL DOOR FRAME AND INSULATED METAL DOOR. PAINTED. CW PRE-FINISHED 24GA. METAL FLASHING.
  - ARCHITECTURAL METAL LOUVER CW FRAME AND PERIMETER TRIM. PRE-FINISHED. COLOUR TO BE DETERMINED BY ARCHITECT
  - PRE-FINISHED VERTICAL METAL SIDING. WESTFORM 1/2" CORRUGATED. COLOUR: STONE GREY
  - PRE-FINISHED "DARK GREY" VERTICAL METAL SIDING SKIRTING. WESTFORM WF363. COLOUR: CHARCOAL
  - PRE-FINISHED HORIZONTAL METAL SIDING. WESTFORM 1/2" CORRUGATED. COLOUR TO BE SELECTED BY ARCHITECT. COLOURS: ARCTIC CORRIDOR: HERON BLUE. KITCHEN AND DINING: STONE GREY
  - PRE-FINISHED "BLUE" HORIZONTAL METAL PANELS. KINGSPAN OPTIMA SMOOTH. 2' X 12' PANELS. FINAL COLOUR TO BE SELECTED BY ARCHITECT.
  - PRE-FINISHED "GREY" VERTICAL METAL PANELS. KINGSPAN OPTIMA SMOOTH. 2' X 12' PANELS. FINAL COLOUR TO BE SELECTED BY ARCHITECT.
  - PRE-FINISHED VERTICAL METAL SIDING. VICWEST. AD300SR EXPRESSENCE WOODGRAIN - DARK CEDAR. (EXTERIOR FEATURE WALL)
  - PRE-FINISHED "LIGHT GREY" VERTICAL METAL PANELS. KINGSPAN OPTIMA SMOOTH. 3'-4" X 7' PANELS. FINAL COLOUR TO BE SELECTED BY ARCHITECT.
  - PRE-FINISHED SOFFIT. ARMSTRONG METALWORKS VECTOR EXTERIOR. PATTERN: EFFECTS WOOD LOOKS. FINAL COLOUR TO BE SELECTED BY ARCHITECT.
  - PRE-FINISHED METAL SOFFIT. "WHITE"
  - PRE-FINISHED METAL PARAPET CAP FLASHING. 20 GA. COLOUR TO BE SELECTED BY ARCHITECT.
  - PRE-FINISHED 24 GA METAL FASCIA. COLOUR TO BE SELECTED BY ARCHITECT.
  - PRE-FINISHED 24GA. METAL 6" EAVESTROUGH
  - PRE-FINISHED METAL DOWNSPOUTS 24GA.
  - PRE-FINISHED METAL OVERFLOW SCUPPERS 24GA.
  - PRE-ENGINEERED STANDING SEAM METAL ROOF SYSTEM / METAL ROOF PANELS. COLOUR TO BE DETERMINED
  - GALVANIZED STEEL ICE GUARDS
  - EXTERIOR STEEL COLUMNS. PAINTED. COLOUR TO BE SELECTED BY ARCHITECT.
  - FUTURE EXTERIOR RAMP. (NOT IN CONTRACT) CW PAINTED STEEL GUARDRAIL AND HANDRAIL. SLOPE 1:12.
  - DECORATIVE WOOD TRIM PIECE
  - PRE-FINISHED METAL CLADDED TOP BAND TRIM. VICWEST. COLOUR TO BE SELECTED BY ARCHITECT.
  - PRE-FINISHED METAL CLADDED LOWER BAND TRIM. VICWEST. COLOUR TO BE SELECTED BY ARCHITECT.
  - PRE-FINISHED 12" METAL EAVE TRIM 24 GA. COLOUR TO BE SELECTED BY ARCHITECT
  - PRE-MANUFACTURED SKYLIGHT SYSTEM AT RIDGE CW 24 GA METAL FLASHING, DRIP CHANNELS AND CLOSURE.
  - INSULATED SECTIONAL OVERHEAD DOOR. REFER TO DOOR SCHEDULE

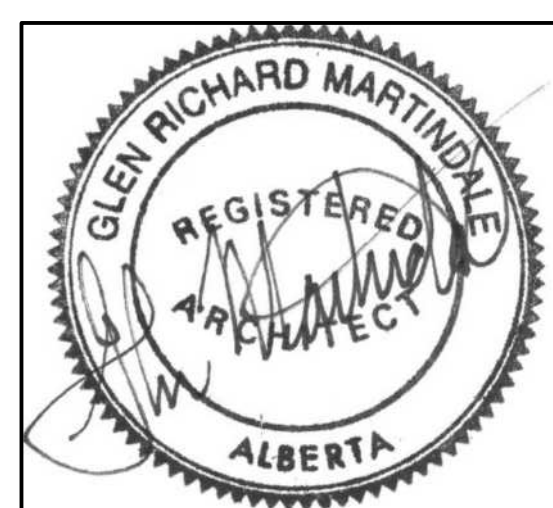


**C SOUTH ELEVATION**  
A-13 1/8" = 1'-0"



**D NORTH ELEVATION**  
A-13 1/8" = 1'-0"

DRAWING NUMBER	REFERENCE DRAWINGS	STAMPS



REV NO	REVISION	DATE	DRN	CKD	DES	LDE	PE
A	ISSUED FOR CLIENT REVIEW	13/06/17	XXX				
B	ISSUED FOR PRICING	13/07/15	AP/MM	GM			
C	REVISED - ISSUED FOR PRICING	13/09/03	AP/MM	GM		GM	
D	ISSUED FOR DEVELOPMENT PERMIT	13/09/23	AP/MM	GM	GM	GM	
E	REVISED - ISSUED FOR PRICING	14/01/24	MM	GM	GM	GM	
F	ISSUED FOR BUILDING PERMIT	14/04/15	MM	GM	GM	GM	

DESIGNED BY	CONSULTANT LOGO
RK	 Roman Kujath Architects 415 10357 109 Street Edmonton, Alberta T5J 1N3 P 780 420 1237 F 780 429 1498 E gmartindale@rkarchitects.ca
DRAWN BY	
AP / MM	
CHECKED BY	
GM	
LEAD DISC ENG	
PROJECT ENGINEER	DATE
	14/04/15
SCALE	CADD FILE NAME
1/8" = 1'-0"	
WORK PACKAGE #	PROJECT NO.
	1310

**cenovus ENERGY**  
Cenovus FCCL Ltd

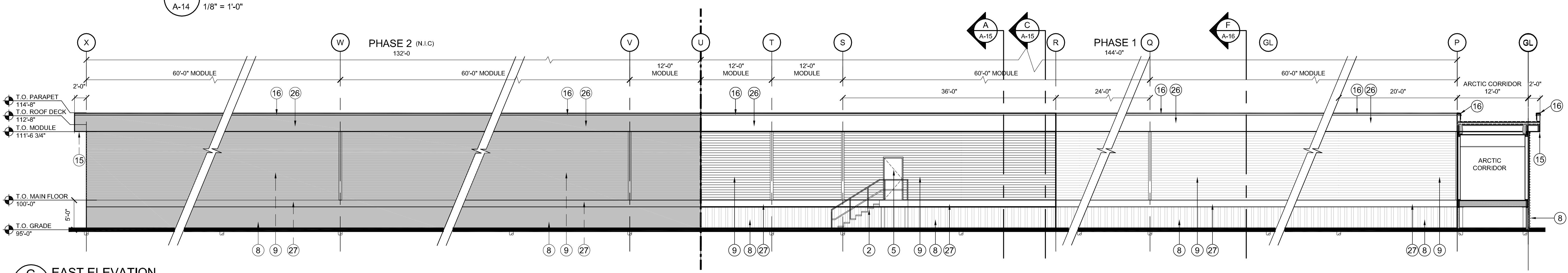
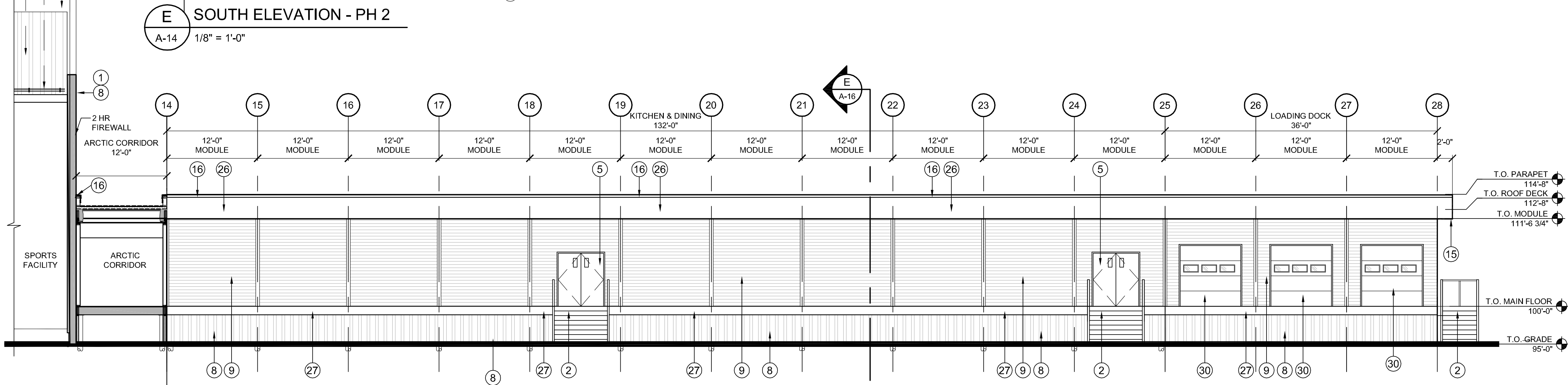
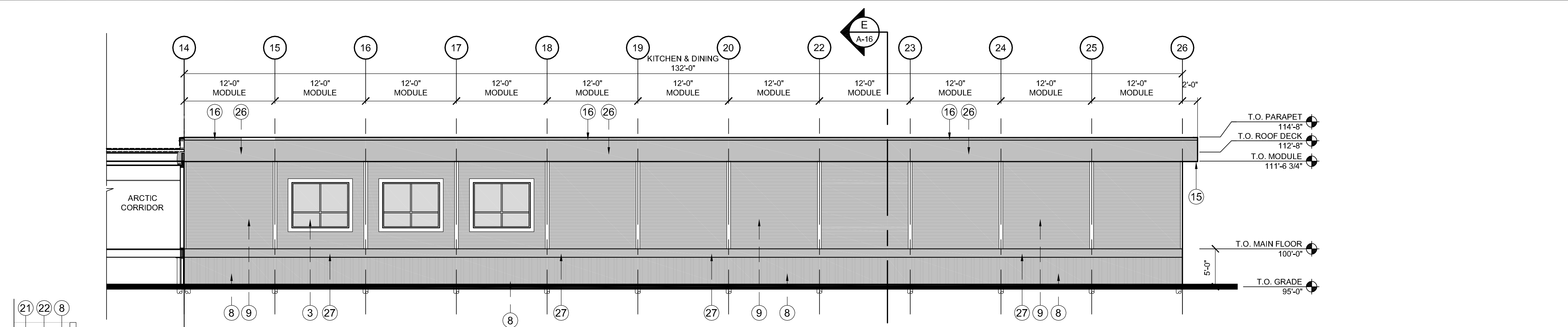
**TITLE**  
NARROWS LAKE  
SPORTS FACILITY / ADMINISTRATION & LEISURE  
KITCHEN & DINING ROOM  
OVERALL BUILDING ELEVATIONS

DRAWING DOCUMENT CONTROL NUMBER: NL1-45-BLD-00-0XX-#  
REVISION: F  
DRAWING: A-13

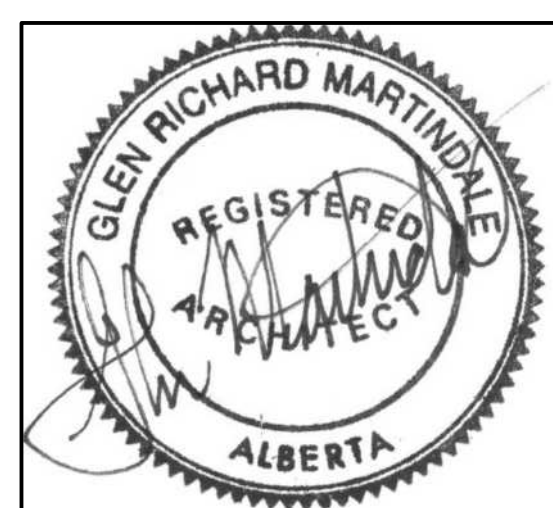


**FUTURE DEVELOPMENT LEGEND**

- SPORTS FACILITY
- KITCHEN & DINING PH. 2
- PHASE 1 KEYNOTE (IN CONTRACT)
- FUTURE PHASE KEYNOTE (NOT IN CONTRACT)



DRAWING NUMBER	REFERENCE DRAWINGS	STAMPS



REV NO	REVISION	DATE	DRN	CKD	DES	LDE	PE
F	ISSUED FOR CLIENT REVIEW	13/06/17	XXX				
B	ISSUED FOR PRICING	13/07/15	AP/IMM	GM			
C	REVISED - ISSUED FOR PRICING	13/09/03	AP/IMM	GM		GM	
D	ISSUED FOR DEVELOPMENT PERMIT	13/09/23	AP/IMM	GM	GM	GM	
E	REVISED - ISSUED FOR PRICING	14/01/24	MM	GM	GM	GM	
F	ISSUED FOR BUILDING PERMIT	14/04/15	MM	GM	GM	GM	GM

DESIGNED BY RK	CONSULTANT LOGO 
DRAWN BY AP / MM	Romen Kujath Architects 415 10357 109 Street Edmonton, Alberta T5J 1N3 P 780 420 1237 F 780 429 1498 E gmartindale@rkarchitects.ca
CHECKED BY GM	
LEAD DISC ENG	DATE 14/04/15
PROJECT ENGINEER	SCALE 1/8" = 1'-0"
WORK PACKAGE #	CADD FILE NAME
PROJECT NO. 1310	

**cenovus ENERGY**  
Cenovus FCCL Ltd

**TITLE**  
NARROWS LAKE  
SPORTS FACILITY / ADMINISTRATION & LEISURE  
KITCHEN & DINING ROOM  
OVERALL BUILDING ELEVATIONS

DRAWING DOCUMENT CONTROL NUMBER  
NL1-45-BLD-00-0XX-#

REVISION  
F

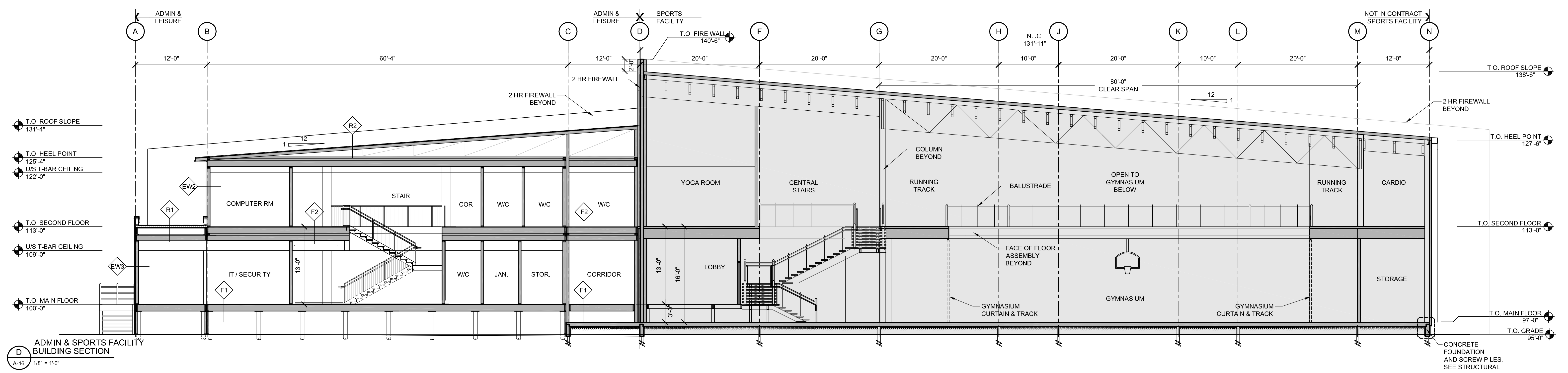
DRAWING  
A-14



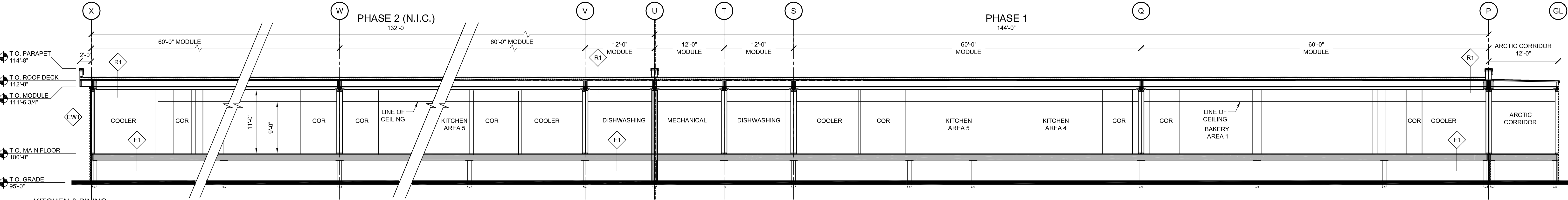




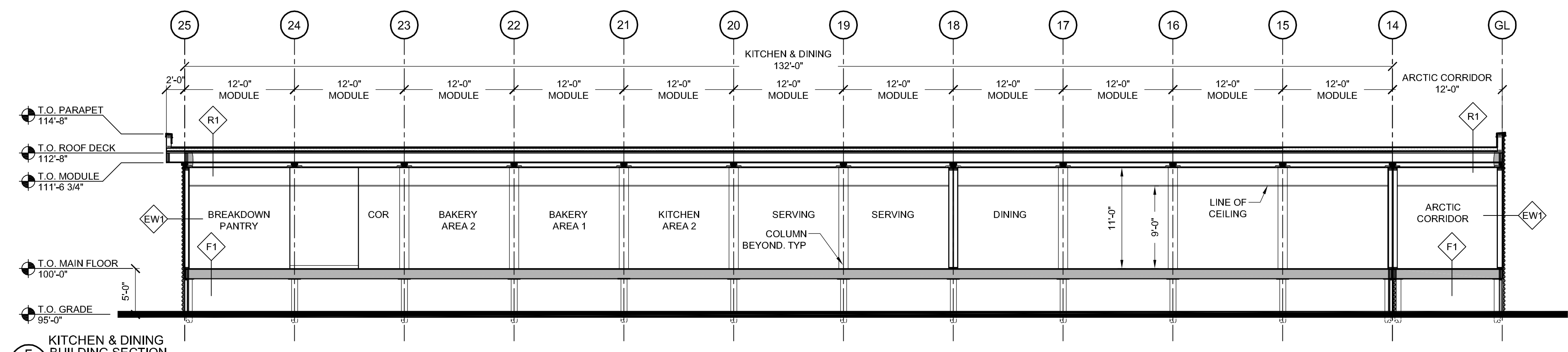
REV E  
# NL1-45-BLD-00-0XX-#



**D ADMIN & SPORTS FACILITY BUILDING SECTION**  
A-16 1/8" = 1'-0"



**E KITCHEN & DINING BUILDING SECTION**  
A-16 1/8" = 1'-0"

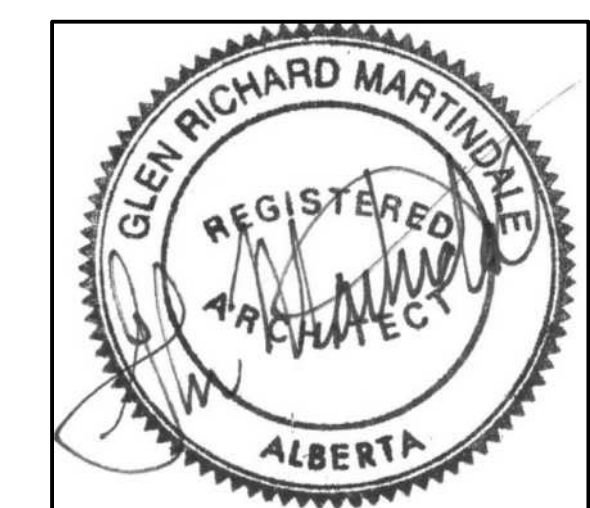


**F KITCHEN & DINING BUILDING SECTION**  
A-16 1/8" = 1'-0"

**FUTURE DEVELOPMENT LEGEND**

- SPORTS FACILITY
- KITCHEN & DINING PH. 2

DRAWING NUMBER	REFERENCE DRAWINGS	STAMPS



REV NO	REVISION	DATE	DRN	CKD	DES	LDE	PE
A	ISSUED FOR REVIEW	13/06/17					
B	ISSUED FOR PRICING	13/07/15	AP/MM	GM			
C	REVISED - ISSUED FOR PRICING	13/09/03	AP/MM	GM		GM	
D	ISSUED FOR DEVELOPMENT PERMIT	13/09/23	MM	GM	GM	GM	
E	ISSUED FOR BUILDING PERMIT	14/04/15	MM	GM	GM	GM	

DESIGNED BY <b>RK</b>	CONSULTANT LOGO 
DRAWN BY <b>AP / MM</b>	Roman Kujath Architects 415 10357 109 Street Edmonton, Alberta T5J 1N3 P 780 420 1237 F 780 429 1498 E gmartindale@rkarchitects.ca
CHECKED BY <b>GM</b>	PROJECT ENGINEER
LEAD DISC ENG	DATE <b>14/04/15</b>
	SCALE <b>1/8" = 1'-0"</b>
	WORK PACKAGE #
	CADD FILE NAME
	PROJECT NO. <b>1310</b>

**cenovus**  
ENERGY

Cenovus FCCL Ltd

TITLE

**NARROWS LAKE**

**SPORTS FACILITY / ADMINISTRATION & LEISURE**

**KITCHEN & DINING ROOM**

**OVERALL BUILDING SECTIONS**

DRAWING DOCUMENT CONTROL NUMBER  
**NL1-45-BLD-00-0XX-#**

REVISION  
**E**

DRAWING  
**A-16**



**CONSTRUCTION TYPES**

**EXTERIOR WALL ASSEMBLIES**

**EW1** METAL CLAD EXTERIOR WALL - KITCHEN & DINING  
 PREFINISHED "BLUE" HORIZONTAL METAL SIDING, VICWEST, PROFILE 7040. COLOUR TO BE SELECTED BY ARCHITECT. SEE ELEVATIONS ON A12-A14 FOR MORE INFORMATION. COMMERCIAL GRADE BUILDING WRAP (TYVEK)  
 1/2" EXTERIOR GRADE SPF PLYWOOD SHEATHING G  
 2"x6" # 2 SPF WOOD STUDS & PLATES @ 16" O.C.  
 C/W 6" R20 FIBRE BATT INSULATION  
 6 MIL POLY AIR/VAPOUR BARRIER  
 3/4" SPRUCE PLYWOOD SHEATHING  
 3/4" TYPE 'X' GYPSUM BOARD (TAPE, FILLED & SANDED)  
 STUD SPACING AND SIZE TO BE CONFIRMED BY A STRUCTURAL ENGINEER.

**EW2** VERTICAL METAL EXTERIOR WALL - ADMIN & LEISURE  
 PREFINISHED "DARK GREY" VERTICAL METAL SIDING, VICWEST, AD300SR.  
 COLOUR TO BE SELECTED BY ARCHITECT. SEE ELEVATIONS ON A12-A14 FOR MORE INFORMATION. COMMERCIAL GRADE BUILDING WRAP (TYVEK)  
 1/2" EXTERIOR GRADE SPF PLYWOOD SHEATHING G  
 2"x6" # 2 SPF WOOD STUDS & PLATES @ 16" O.C.  
 C/W 6" R20 FIBRE BATT INSULATION  
 6 MIL POLY AIR/VAPOUR BARRIER  
 3/4" SPRUCE PLYWOOD SHEATHING  
 3/4" TYPE 'X' GYPSUM BOARD (TAPE, FILLED & SANDED)  
 STUD SPACING AND SIZE TO BE CONFIRMED BY A STRUCTURAL ENGINEER

**EW3** HORIZONTAL METAL EXTERIOR WALL - ADMIN & LEISURE  
 PREFINISHED "BLUE" HORIZONTAL METAL SIDING, VICWEST, AD300SR, STAGGERED BRICK INSTALLATION.  
 COLOUR TO BE SELECTED BY ARCHITECT. SEE ELEVATIONS ON A12-A14 FOR MORE INFORMATION. COMMERCIAL GRADE BUILDING WRAP (TYVEK)  
 1/2" EXTERIOR GRADE SPF PLYWOOD SHEATHING G  
 2"x6" # 2 SPF WOOD STUDS & PLATES @ 16" O.C.  
 C/W 6" R20 FIBRE BATT INSULATION  
 6 MIL POLY AIR/VAPOUR BARRIER  
 3/4" SPRUCE PLYWOOD SHEATHING  
 3/4" TYPE 'X' GYPSUM BOARD (TAPE, FILLED & SANDED)  
 STUD SPACING AND SIZE TO BE CONFIRMED BY A STRUCTURAL ENGINEER.

**EW4** METAL SKIRTING - ADMIN & LEISURE  
 PREFINISHED "DARK GREY" VERTICAL METAL SIDING (SKIRTING), VICWEST, PROFILE 7040. COLOUR TO BE SELECTED BY ARCHITECT. SEE ELEVATIONS ON A12-A14 FOR MORE INFORMATION. COMMERCIAL GRADE BUILDING WRAP (TYVEK)  
 3/4" SPRUCE PLYWOOD SHEATHING  
 2"x6" # 2 SPF WOOD STUDS & PLATES @ 16" O.C.  
 C/W 6" MINERAL WOOL INSULATION  
 6 MIL POLY VAPOUR AIR/VAPOUR BARRIER  
 3/4" SPRUCE PLYWOOD SHEATHING  
 PAINT PLYWOOD WITH ULC CLASS "A" FLAT WHITE INTUMESCENT ALKYL FIRE RETARDANT PAINT.  
 STUD SPACING AND SIZE TO BE CONFIRMED BY A STRUCTURAL ENGINEER.

**EW5** MAIN FLOOR FEATURE WALL - ADMIN & LEISURE/SPORTS  
 PREFINISHED ARCHITECTURAL METAL PANELS, VICWEST SYSTEM 3. COLOUR TO BE SELECTED BY ARCHITECT. SEE ELEVATIONS ON A12-A14 FOR MORE INFORMATION. COMMERCIAL GRADE BUILDING WRAP (TYVEK)  
 1/2" EXTERIOR GRADE SPF PLYWOOD SHEATHING G  
 2"x6" # 2 SPF WOOD STUDS STAGGERED @ 16" O.C.  
 C/W 2"x12" TOP AND BOTTOM PLATES  
 1/2" EXTERIOR GRADE SPF PLYWOOD SHEATHING G  
 STUD SPACING AND SIZE TO BE CONFIRMED BY A STRUCTURAL ENGINEER.  
 TYPICAL EXTERIOR MODULAR WALL ASSEMBLY

**EW6** 2ND FLOOR FEATURE EXTERIOR WALL - ADMIN & LEISURE  
 PREFINISHED VERTICAL METAL SIDING, VICWEST, AD300SR WITH REYNOBOND COATING.  
 COLOUR TO BE SELECTED BY ARCHITECT. SEE ELEVATIONS ON A12-A14 FOR MORE INFORMATION. COMMERCIAL GRADE BUILDING WRAP (TYVEK)  
 1/2" EXTERIOR GRADE SPF PLYWOOD SHEATHING G  
 2"x6" # 2 SPF WOOD STUDS & PLATES @ 16" O.C.  
 1/2" EXTERIOR GRADE SPF PLYWOOD SHEATHING G  
 STUD SPACING AND SIZE TO BE CONFIRMED BY A STRUCTURAL ENGINEER.  
 TYPICAL EXTERIOR MODULAR WALL ASSEMBLY

**PARTITION APPENDIX**

**A** 3/2" WATER RESISTANT GYPSUM BOARD (BEHIND WALL TILES AND SHOWER CABINETS)

**EW7** FIRE WALL WITH CLADDING BOTH SIDES- ADMIN & LEISURE/SPORTS  
 PREFINISHED "DARK GREY" VERTICAL METAL SIDING, VICWEST, PROFILE 7040. COLOUR TO BE SELECTED BY ARCHITECT. SEE ELEVATIONS ON A12-A14 FOR MORE INFORMATION.  
 1/2" FURRING CHANNELS  
 1" AIR SPACE  
 TYVEK BUILDING PAPER  
 2 LAYERS OF 3/4" TYPE 'X' GYPSUM BOARD (TAPE, FILLED & SANDED)  
 8" STEEL STUDS (800S200-54) @ 16" O.C.  
 MINERAL BATT WOOL INSULATION - FULL CAVITY.  
 2 LAYERS OF 3/4" TYPE 'X' GYPSUM BOARD (TAPE, FILLED & SANDED)  
 TYVEK BUILDING PAPER  
 1" AIR SPACE  
 1/2" FURRING CHANNELS  
 PREFINISHED "DARK GREY" VERTICAL METAL SIDING, VICWEST, PROFILE 7040. COLOUR TO BE SELECTED BY ARCHITECT.

**EW8** FIRE WALL WITH CLADDING ONE SIDE - ADMIN & LEISURE/SPORTS  
 PREFINISHED "DARK GREY" VERTICAL METAL SIDING, VICWEST, PROFILE 7040. COLOUR TO BE SELECTED BY ARCHITECT. SEE ELEVATIONS ON A12-A14 FOR MORE INFORMATION.  
 1/2" FURRING CHANNELS  
 1" AIR SPACE  
 TYVEK BUILDING PAPER  
 2 LAYERS OF 3/4" TYPE 'X' GYPSUM BOARD (TAPE, FILLED & SANDED)  
 8" STEEL STUDS (800S200-54) @ 16" O.C.  
 MINERAL BATT WOOL INSULATION - FULL CAVITY.  
 2 LAYERS OF 3/4" TYPE 'X' GYPSUM BOARD (TAPE, FILLED & SANDED)

**PARTITION ASSEMBLIES**

**P1** MODULE TO MODULE ASSEMBLY  
 3/4" TYPE 'X' GYPSUM BOARD SHEATHING  
 3/4" SPRUCE PLYWOOD SHEATHING  
 2"x6" WOOD STUDS/PLATES @ 16" O.C.  
 C/W 6" BATT INSULATION  
 6 MIL POLY VAPOUR RETARDER  
 3/4" SPRUCE PLYWOOD SHEATHING  
 2- #15 BUILDING PAPER  
 AIR SPACE BETWEEN MODULES  
 2- #15 BUILDING PAPER  
 3/4" SPRUCE PLYWOOD SHEATHING  
 6 MIL POLY VAPOUR RETARDER  
 2"x6" WOOD STUDS/PLATES @ 16" O.C.  
 C/W 5 1/2" BATT INSULATION  
 3/4" SPRUCE PLYWOOD SHEATHING  
 3/4" TYPE 'X' GYPSUM BOARD SHEATHING  
 STUD SPACING AND SIZE TO BE CONFIRMED BY A STRUCTURAL ENGINEER.

**P2** 45 MIN. FIRE RATED MODULE TO MODULE ASSEMBLY  
 2 LAYERS 3/4" TYPE 'X' GYPSUM BOARD SHEATHING  
 3/4" SPRUCE PLYWOOD SHEATHING  
 2"x6" WOOD STUDS/PLATES @ 16" O.C.  
 C/W 6" BATT INSULATION  
 6 MIL POLY VAPOUR RETARDER  
 3/4" SPRUCE PLYWOOD SHEATHING  
 2- #15 BUILDING PAPER  
 AIR SPACE BETWEEN MODULES  
 2- #15 BUILDING PAPER  
 3/4" SPRUCE PLYWOOD SHEATHING  
 6 MIL POLY VAPOUR RETARDER  
 2"x6" WOOD STUDS/PLATES @ 16" O.C.  
 C/W 5 1/2" BATT INSULATION  
 3/4" SPRUCE PLYWOOD SHEATHING  
 3/4" TYPE 'X' GYPSUM BOARD SHEATHING  
 STUD SPACING AND SIZE TO BE CONFIRMED BY A STRUCTURAL ENGINEER.

**P3** 1 HR. FIRE RATED MODULE TO MODULE ASSEMBLY  
 2 LAYERS 3/4" TYPE 'X' GYPSUM BOARD SHEATHING  
 3/4" SPRUCE PLYWOOD SHEATHING  
 2"x6" WOOD STUDS/PLATES @ 16" O.C.  
 C/W 6" BATT INSULATION  
 6 MIL POLY VAPOUR RETARDER  
 2- #15 BUILDING PAPER  
 AIR SPACE BETWEEN MODULES  
 2- #15 BUILDING PAPER  
 3/4" SPRUCE PLYWOOD SHEATHING  
 6 MIL POLY VAPOUR RETARDER  
 2"x6" WOOD STUDS/PLATES @ 16" O.C.  
 C/W 5 1/2" BATT INSULATION  
 3/4" SPRUCE PLYWOOD SHEATHING  
 1/2" GYPSUM BOARD SHEATHING  
 STUD SPACING AND SIZE TO BE CONFIRMED BY A STRUCTURAL ENGINEER.

**P4** MODULE TO FIRE WALL TO MODULE ASSEMBLY  
 3/4" TYPE 'X' GYPSUM BOARD SHEATHING  
 3/4" SPRUCE PLYWOOD SHEATHING  
 2"x6" WOOD STUDS/PLATES @ 16" O.C.  
 C/W 6" BATT INSULATION  
 6 MIL POLY VAPOUR RETARDER  
 3/4" SPRUCE PLYWOOD SHEATHING  
 2- #15 BUILDING PAPER  
 1" AIR SPACE  
 2 LAYERS TYPE X GYPSUM BOARD  
 8" STEEL STUDS (800S200-54) @ 16" O.C.  
 MINERAL WOOL BATT INSULATION - FULL CAVITY  
 2 LAYERS TYPE X GYPSUM BOARD  
 1" AIR SPACE  
 2- #15 BUILDING PAPER  
 3/4" SPRUCE PLYWOOD SHEATHING  
 6 MIL POLY VAPOUR RETARDER  
 2"x6" WOOD STUDS/PLATES @ 16" O.C.  
 C/W 5 1/2" BATT INSULATION  
 3/4" SPRUCE PLYWOOD SHEATHING  
 1/2" GYPSUM BOARD SHEATHING  
 STUD SPACING AND SIZE TO BE CONFIRMED BY A STRUCTURAL ENGINEER.

**P5** 2 HR. FIRE SEPARATION - STC RATING 59  
 2 LAYERS OF 3/4" TYPE 'X' GYPSUM BOARD SHEATHING  
 6" WOOD STUDS/PLATES @ 16" O.C.  
 C/W 6" MINERAL ROCK WOOL  
 2 LAYERS OF 3/4" TYPE 'X' GYPSUM BOARD SHEATHING  
 PARTITIONS ARE CONTINUOUS TO U/S OF STRUCTURAL STEEL DECK

**P6** 4" INTERIOR PARTITION ASSEMBLY  
 NON-RATED PARTITION - STC RATING 32  
 1/2" GYPSUM BOARD SHEATHING  
 2"x4" WOOD STUDS/PLATES @ 16" O.C.  
 C/W 3/2" ACOUSTIC BATT INSULATION  
 1/2" GYPSUM BOARD SHEATHING  
 PARTITIONS ARE CONTINUOUS TO U/S OF ROOF/FLOOR DECK

**P7** 6" INTERIOR PARTITION ASSEMBLY  
 NON-RATED PARTITION - STC RATING XX  
 1/2" GYPSUM BOARD SHEATHING  
 2"x6" WOOD STUDS/PLATES @ 16" O.C.  
 C/W 5 1/2" ACOUSTIC BATT INSULATION  
 1/2" GYPSUM BOARD SHEATHING  
 PARTITIONS ARE CONTINUOUS TO U/S OF ROOF/FLOOR DECK

**P8** 45 MIN. FIRE RATED PARTITION ASSEMBLY  
 ALBERTA BUILDING CODE 2006  
 TABLE A-9.10.3.1.A. WALL NUMBER W1a  
 STC RATING - MIN. 36  
 3/4" TYPE 'X' GYPSUM BOARD  
 2"x6" WOOD STUDS/PLATES @ 16" O.C.  
 C/W 5 1/2" ACOUSTIC BATT INSULATION  
 3/4" TYPE 'X' GYPSUM BOARD  
 PARTITIONS ARE CONTINUOUS TO U/S OF ROOF/FLOOR DECK

**P9** 1 HR. FIRE RATED PARTITION ASSEMBLY  
 ALBERTA BUILDING CODE 2006  
 TABLE A-9.10.3.1.A. WALL NUMBER W1a  
 STC RATING - MIN. 36  
 3/4" TYPE 'X' GYPSUM BOARD  
 2"x6" WOOD STUDS/PLATES @ 16" O.C.  
 C/W 5 1/2" ACOUSTIC BATT INSULATION  
 3/4" TYPE 'X' GYPSUM BOARD  
 PARTITIONS ARE CONTINUOUS TO U/S OF ROOF/FLOOR DECK

**P10** 6" INTERIOR PLUMBING PARTITION ASSEMBLY  
 NON-RATED PARTITION - STC RATING XX  
 1/2" GYPSUM BOARD SHEATHING  
 2"x6" WOOD STUDS/PLATES @ 16" O.C.  
 C/W 5 1/2" ACOUSTIC BATT INSULATION  
 1/2" GYPSUM BOARD SHEATHING  
 PARTITIONS ARE CONTINUOUS TO U/S OF ROOF/FLOOR DECK

**P11** 1 HR. FIRE RATED PLUMBING PARTITION ASSEMBLY  
 ALBERTA BUILDING CODE 2006  
 TABLE A-9.10.3.1.A. WALL NUMBER W1a  
 STC RATING - MIN. 36  
 3/4" TYPE 'X' GYPSUM BOARD  
 2"x6" WOOD STUDS/PLATES @ 16" O.C.  
 C/W 5 1/2" ACOUSTIC BATT INSULATION  
 3/4" TYPE 'X' GYPSUM BOARD  
 PARTITIONS ARE CONTINUOUS TO U/S OF ROOF/FLOOR DECK

**NOT USED**

**P12** 4"-0" INTERIOR PONY WALL ASSEMBLY  
 NON-RATED PARTITION - STC RATING XX  
 1/2" GYPSUM BOARD SHEATHING  
 2"x6" WOOD STUDS/PLATES @ 16" O.C.  
 C/W 5 1/2" ACOUSTIC BATT INSULATION  
 1/2" GYPSUM BOARD SHEATHING

**ROOF ASSEMBLIES**

**R1** SLOPED TO DRAIN ROOF (FLAT DECK) - KDR/ADMIN  
 S.B.S. ON SLOPED TO DRAIN INSULATION (FLAT DECK) TO ARCA STANDARDS - 5 YEAR WARRANTY PLUS MANUFACTURER'S 10 YEAR PLATINUM WARRANTY. S.B.S. TORCH ON CAP SHEET - HEAT WELDED WITH THERMOFUSIBLE UNDERFACE  
 SBS TORCH ON BASE SHEET - HEAT WELDED WITH THERMOFUSIBLE UNDERFACE  
 1" THICK FIBRE BOARD PROTECTIVE LAYER  
 SLOPED POLYSTYRENE TYPE 2 RIGID INSULATION. DEPTH VARIES. SEE ROOF PLAN ON A-7.  
 2 LAYERS OF 2" POLYISOCYANURATE RIGID INSULATION (4" TOTAL) - STAGGER JOINTS TO MIDPOINT OF LOWER SHEET  
 S.B.S. COMPATIBLE VAPOUR BARRIER SHEET (S.B.S. WITH THERMOFUSIBLE UNDERFACE, S.B.S. MOP APPLIED, OR SELF ADHESIVE S.B.S.)  
 1/2" SPF PLYWOOD ROOF SHEATHING  
 ENGINEERED WOOD JOIST SYSTEM (SIZING AND SPACING TO BE CONFIRMED BY STRUCTURAL ENGINEER)  
 C/W ACOUSTIC BATT INSULATION (MIN. R32)  
 1/2" SPF PLYWOOD SHEATHING  
 MODULAR CEILING ASSEMBLY. SEE CONSTRUCTION ASSEMBLY C1

**R2** 1:12 SLOPED METAL ROOF - ADMIN & LEISURE  
 PRE FINISHED STANDING SEAM METAL ROOF MIN. 24 GA. 2" STANDING SEAM  
 FULL 2mm Peel AND STICK BITUTHENE MEMBRANE MEETING REQUIREMENTS OF ARCA WARRANTIES ON 1/2" EXTERIOR SPRUCE PLYWOOD SHEATHING G  
 1:12 PITCH PRE - ENGINEERED WOOD TRUSS SYSTEM SIZING AND SPACING TO BE CONFIRMED BY STRUCTURAL ENGINEER  
 C/W R40 LOOSE FILL OR BATT INSULATION  
 6 mil POLYETHYLENE AIR/VAPOUR RETARDER  
 1/2" TYPE 'X' GYPSUM BOARD TO U/S OF ROOF JOISTS

**R3** CANOPY ROOF - ADMIN & LEISURE  
 S.B.S. ON SLOPED TO DRAIN INSULATION (FLAT DECK) TO ARCA STANDARDS - 5 YEAR WARRANTY PLUS MANUFACTURER'S 10 YEAR PLATINUM WARRANTY. S.B.S. TORCH ON CAP SHEET - HEAT WELDED WITH THERMOFUSIBLE UNDERFACE  
 SBS TORCH ON BASE SHEET - HEAT WELDED WITH THERMOFUSIBLE UNDERFACE  
 1" THICK FIBRE BOARD PROTECTIVE LAYER  
 12 1/2" PRE ENGINEERED TJI JOISTS  
 SIZING AND SPACING TO BE CONFIRMED BY STRUCTURAL ENGINEER  
 PERFORATED PRE-FINISHED SOFFIT TO U/S OF JOISTS

**MODULAR ASSEMBLIES**

**F1** MODULAR MAIN FLOOR ASSEMBLY  
 FLOOR FINISH, SEE FINISH SCHEDULE ON AD-1  
 1/2" FIR UNDERLAY PLYWOOD  
 3/4" T&G PLYWOOD SUBFLOOR, GLUED AND SCREWED TO JOIST  
 ENGINEERED WOOD JOIST SYSTEM (SIZING AND SPACING TO BE CONFIRMED BY STRUCTURAL ENGINEER)  
 C/W ACOUSTIC BATT INSULATION (MIN. R32)  
 1/2" SPRUCE PLYWOOD SOFFIT  
 PAINT U/S OF PLYWOOD WITH ULC CLASS "A" FLAT WHITE INTUMESCENT ALKYL FIRE RETARDANT PAINT  
 PROVIDE 1 1/2" GAP BETWEEN MODULES. SEE REFLECTED CEILING FINISHES ON AA3-4 AND AB3-4 FOR CEILING FINISHES

**CA1** MODULAR MAIN FLOOR CEILING ASSEMBLY  
 2 LAYERS OF 3/4" TYPE 'X' GYPSUM BOARD SHEATHING, TAPED, FILLED, SANDED AND PAINTED.  
 3/4" SPRUCE PLYWOOD SHEATHING  
 CEILING JOIST SYSTEM (SIZING AND SPACING TO BE CONFIRMED BY STRUCTURAL ENGINEER)  
 1/2" SPRUCE PLYWOOD SHEATHING  
 PROVIDE TEMPORARY PROTECTION FOR TRANSPORTATION.  
 PROVIDE 1 1/2" GAP BETWEEN MODULES. SEE REFLECTED CEILING FINISHES ON AA3-4 AND AB3-4 FOR CEILING FINISHES

**F2** MODULAR SECOND FLOOR ASSEMBLY  
 FLOOR FINISH, SEE FINISH SCHEDULE ON AD-1  
 1/2" FIR UNDERLAY PLYWOOD  
 3/4" T&G PLYWOOD SUBFLOOR, GLUED AND SCREWED TO JOIST  
 ENGINEERED WOOD JOIST SYSTEM (SIZING AND SPACING TO BE CONFIRMED BY STRUCTURAL ENGINEER)  
 C/W ACOUSTIC BATT INSULATION (MIN. R32)  
 1/2" SPRUCE PLYWOOD SOFFIT  
 PAINT U/S OF PLYWOOD WITH ULC CLASS "A" FLAT WHITE INTUMESCENT ALKYL FIRE RETARDANT PAINT.  
 PROVIDE 1 1/2" GAP BETWEEN MODULES.

**CA2** MODULAR SECOND FLOOR CEILING ASSEMBLY  
 2 LAYERS OF 3/4" TYPE 'X' GYPSUM BOARD SHEATHING, TAPED, FILLED, SANDED AND PAINTED.  
 3/4" SPRUCE PLYWOOD SHEATHING  
 CEILING JOIST SYSTEM (SIZING AND SPACING TO BE CONFIRMED BY STRUCTURAL ENGINEER)  
 1/2" SPRUCE PLYWOOD SHEATHING  
 PROVIDE TEMPORARY PROTECTION FOR TRANSPORTATION.  
 PROVIDE 1 1/2" GAP BETWEEN MODULES. SEE REFLECTED CEILING FINISHES ON AA3-4 AND AB3-4 FOR CEILING FINISHES

**PARAPET ASSEMBLIES**


**PT1** STANDARD PARAPET ASSEMBLY - KDR/ADMIN  
 METAL PARAPET CAP FLASHING & PRE-FINISHED METAL FASCIA BREAK SHAPE  
 PEEL & STICK BITUTHENE MEMBRANE  
 1/2" EXTERIOR GRADE GYPSUM BOARD (OR 3/2" SPF PLYWOOD)  
 2"x6" WOOD STUDS/PLATES @ 16" O.C.  
 1/2" EXTERIOR GRADE GYPSUM BOARD (OR 3/2" SPF PLYWOOD)  
 ADHERED S.B.S. MEMBRANE  
 METAL COUNTER FLASHING

**PT2** WIDE PARAPET ASSEMBLY - ADMIN & LEISURE  
 METAL PARAPET CAP FLASHING  
 PEEL & STICK BITUTHENE MEMBRANE  
 1/2" EXTERIOR GRADE GYPSUM BOARD (OR 3/2" SPF PLYWOOD)  
 2 - 2"x6" WOOD STUDS/PLATES @ 16" O.C.  
 1/2" EXTERIOR GRADE GYPSUM BOARD (OR 3/2" SPF PLYWOOD)  
 ADHERED S.B.S. MEMBRANE  
 METAL COUNTER FLASHING

**PT3** FIRE WALL PARAPET ASSEMBLY - ADMIN & LEISURE  
 METAL PARAPET CAP FLASHING  
 C/W BITUTHENE CAP MEMBRANE  
 PREFINISHED VERTICAL METAL SIDING  
 7/8" FURRING CHANNELS  
 1" AIR SPACE  
 TYVEK BUILDING PAPER  
 2 LAYERS OF 5/8" TYPE 'X' GYPSUM BOARD (TAPE, FILLED & SANDED)  
 8" STEEL STUDS (800S200-54) @ 16" O.C.  
 MINERAL BATT WOOL INSULATION - FULL CAVITY.  
 2 LAYERS OF 5/8" TYPE 'X' GYPSUM BOARD (TAPE, FILLED & SANDED)  
 TYVEK BUILDING PAPER  
 1" AIR SPACE  
 7/8" FURRING CHANNELS  
 PREFINISHED VERTICAL METAL SIDING  
 METAL PARAPET CAP FLASHING

**PT4** 2ND FLOOR FEATURE WALL PARAPET ASSEMBLY - ADMIN & LEISURE  
 METAL PARAPET CAP FLASHING  
 C/W BITUTHENE CAP MEMBRANE  
 PREFINISHED VERTICAL METAL SIDING, VICWEST, AD300SR WITH REYNOBOND COATING.  
 COMMERCIAL GRADE BUILDING WRAP (TYVEK)  
 1/2" EXTERIOR GRADE SPF PLYWOOD SHEATHING  
 2"x6" # 2 SPF WOOD STUDS & PLATES @ 16" O.C.  
 1/2" EXTERIOR GRADE SPF PLYWOOD SHEATHING  
 AIR SPACE  
 1/2" EXTERIOR GRADE SPF PLYWOOD SHEATHING  
 2"x6" # 2 SPF WOOD STUDS & PLATES @ 16" O.C.  
 1/2" EXTERIOR GRADE SPF PLYWOOD SHEATHING  
 COMMERCIAL GRADE BUILDING WRAP (TYVEK)  
 METAL PARAPET CAP FLASHING & PRE-FINISHED METAL BREAK SHAPE

**PT5** MAIN FLOOR FEATURE WALL PARAPET ASSEMBLY - ADMIN & LEISURE  
 METAL PARAPET CAP FLASHING  
 C/W BITUTHENE CAP MEMBRANE  
 PREFINISHED ARCHITECTURAL METAL PANELS, VICWEST SYSTEM 3.  
 COMMERCIAL GRADE BUILDING WRAP (TYVEK)  
 1/2" EXTERIOR GRADE SPF PLYWOOD SHEATHING  
 2"x6" # 2 SPF WOOD STUDS STAGGERED @ 16" O.C.  
 C/W 2"x12" TOP AND BOTTOM PLATES  
 1/2" EXTERIOR GRADE SPF PLYWOOD SHEATHING  
 ADHFRFD S.R.S. MEMBRANE

DRAWING NUMBER	REFERENCE DRAWINGS	STAMPS	REV NO	REVISION	DATE	DRN	CKD	DES	LDE	PE	DESIGNED BY	CONSULTANT LOGO	TITLE	DRAWING DOCUMENT CONTROL NUMBER	REVISION	DRAWING
			A	ISSUED FOR REVIEW							RK	 Roman Kujath Architects 415 10357 109 Street Edmonton, Alberta T5J 1N3 P 780 420 1237 F 780 429 1498 E gmartindale@rkarchitects.ca	<b>cenovus</b> ENERGY Cenovus FCCL Ltd NARROWS LAKE SPORTS FACILITY / ADMINISTRATION & LEISURE KITCHEN & DINING ROOM CONSTRUCTION ASSEMBLY LEGEND	NL1-45-BLD-00-0XX-#	E	A-17
			B	ISSUED FOR PRICING	13/07/15	AP/MM	GM			AP / MM						
			C	REVISED - ISSUED FOR PRICING	13/09/03	AP/MM	GM			GM	CHECKED BY GM					
			D	ISSUED FOR DEVELOPMENT PERMIT	13/09/23	AP/MM	GM	GM	GM		LEAD DISC ENG					
			E	ISSUED FOR BUILDING PERMIT	14/04/15	MM	GM	GM	GM		PROJECT ENGINEER					
											DATE 14/04/15					
											SCALE					
											WORK PACKAGE #					
											PROJECT NO.					
												1310				

