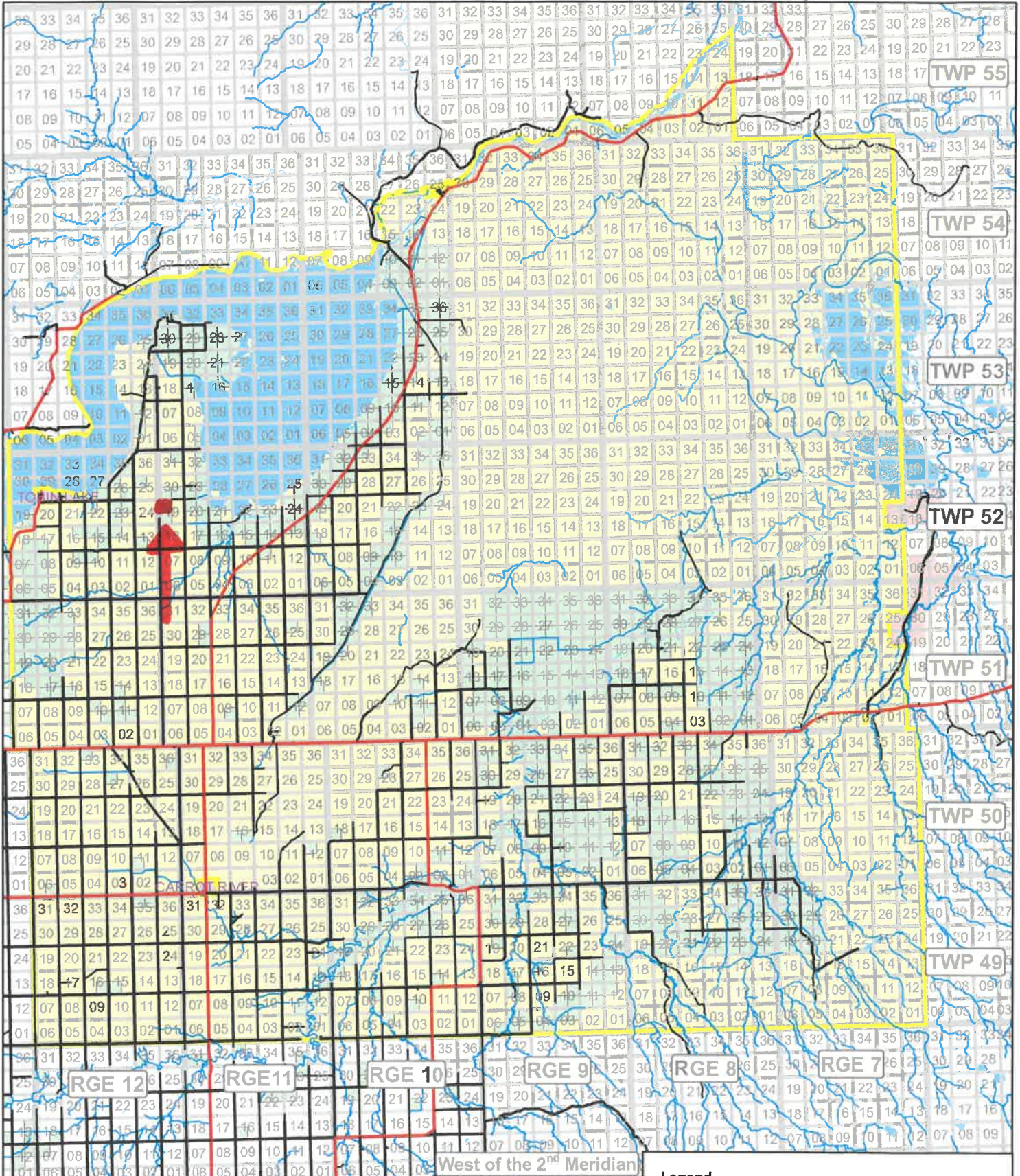


Crown Agricultural Land Rural Municipality No. 486 Moose Range

April 3, 2007



**Saskatchewan
Agriculture
and Food**

© 2007 Government of Saskatchewan



Projection: UTM Zone 13 Datum: NAD83 Spheroid: GRS1980



Legend

- Highway
- Rivers
- Collector
- Lakes
- Resource
- Urban Municipality
- RM of Moose Range
- SAF Crown Land

TWP 54

TWP 53

TWP 52

TOBIN LAKE

NORTHERN PROVINCIAL FOREST

RAVENDALE PEAT MOSS BOG

- COUNCIL FOR 2020
- REEVE - BUD CHARKO
- DIVISION 1 - ROMAN STWARCO
- DIVISION 2 - ALAN STEWART
- DIVISION 3 - BRIAN DIGNISS
- DIVISION 4 - JACOB BUHLER
- DIVISION 5 - KEITH STACEY
- DIVISION 6 - ROY FORBES

ADMINISTRATOR - BEVERLY M.

