



2013 Western Star Bed Truck – Low Use Unit

Series 60 Detroit Non Emission Engine

12,646 Kilometers – 639 Hours





Marcep Rig Up

125,000 LB Main with ¼" line

50,000 LB Second winch 1" line

Gin Poles with Stie Backs

Centre Roll

Kick Bars

5th Wheel Hydraulic Flip

Chalk Blocks

7 Speed Automatic Transmission

4 Speed Air Shift Auxiliary

14" Live Roll

Remote Grease Banks

Webasto Heater

Dual Air Seats

Tilt and telescopic Wheel

Planetary Hubs with 24.5 x 12 Michelin tires

Tandem steers with 445/65 R22.5 Michelins

2 Steer Chains

2 Drive Chains

Cab hydraulic Operation as well as DS Remote Hydraulics

Battery Maintainer

Power Windows

Power Locks

Power Mirrors

Full Chain Up LED lights

Full Work Lights with side extenders

LED Marker Lights

Fresh Oil Change on motor and Transmission

Currently Safetied

GOOD TO GO[®]

TRUCKING

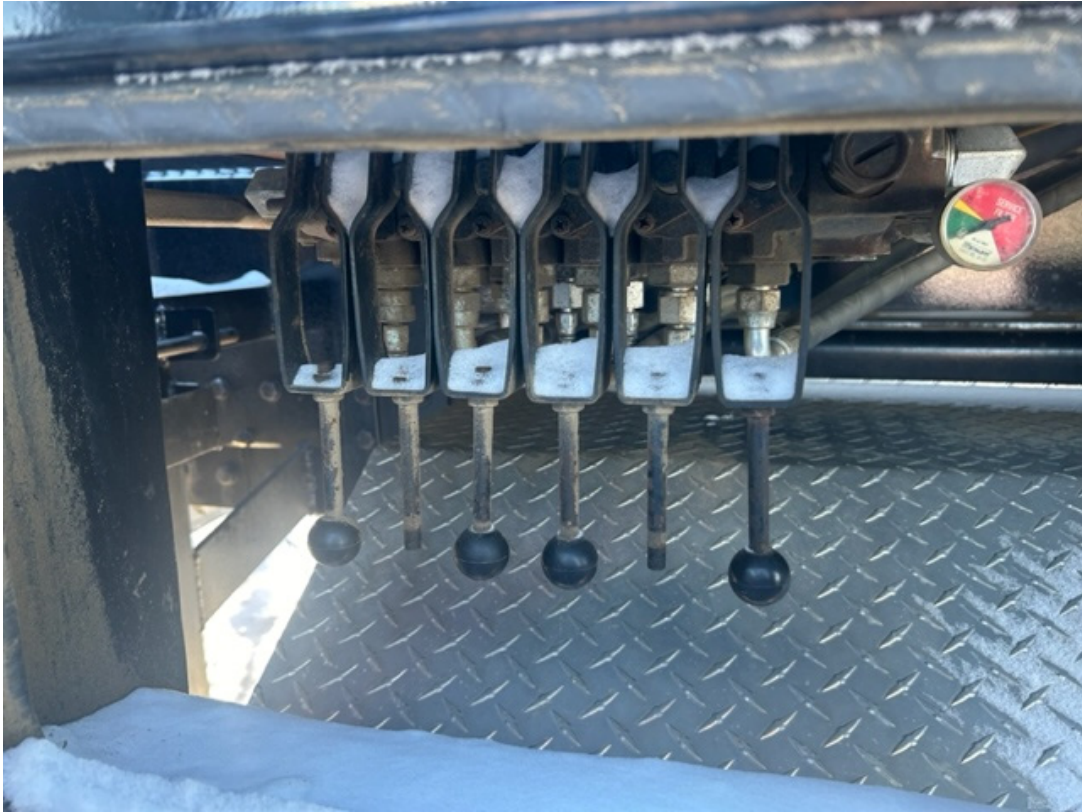




GOOD TO GO[→]

TRUCKING





GOOD TO GO[®]

TRUCKING





GOOD TO GO[®]

TRUCKING



